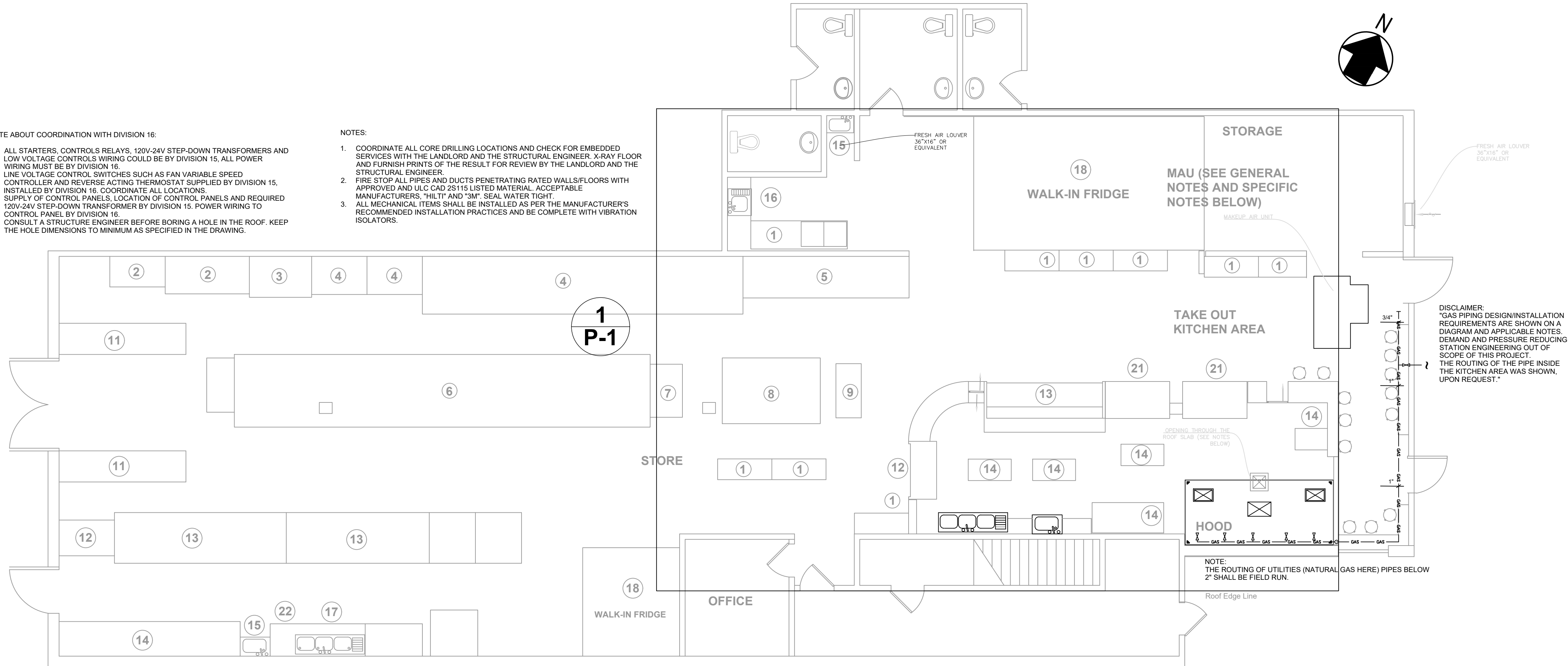


NOTE ABOUT COORDINATION WITH DIVISION 16:

1. ALL STARTERS, CONTROLS RELAYS, 120V-24V STEP-DOWN TRANSFORMERS AND LOW VOLTAGE CONTROLS WIRING COULD BE BY DIVISION 15. ALL POWER WIRING MUST BE BY DIVISION 16.
2. LINE VOLTAGE CONTROL SWITCHES SUCH AS FAN VARIABLE SPEED CONTROLLER AND REVERSE ACTING THERMOSTAT SUPPLIED BY DIVISION 15. INSTALLED BY DIVISION 16. COORDINATE ALL LOCATIONS.
3. SUPPLY OF CONTROL PANELS, LOCATION OF CONTROL PANELS AND REQUIRED 120V-24V STEP-DOWN TRANSFORMER BY DIVISION 15. POWER WIRING TO CONTROL PANEL BY DIVISION 16.
4. CONSULT A STRUCTURE ENGINEER BEFORE BORING A HOLE IN THE ROOF. KEEP THE HOLE DIMENSIONS TO MINIMUM AS SPECIFIED IN THE DRAWING.

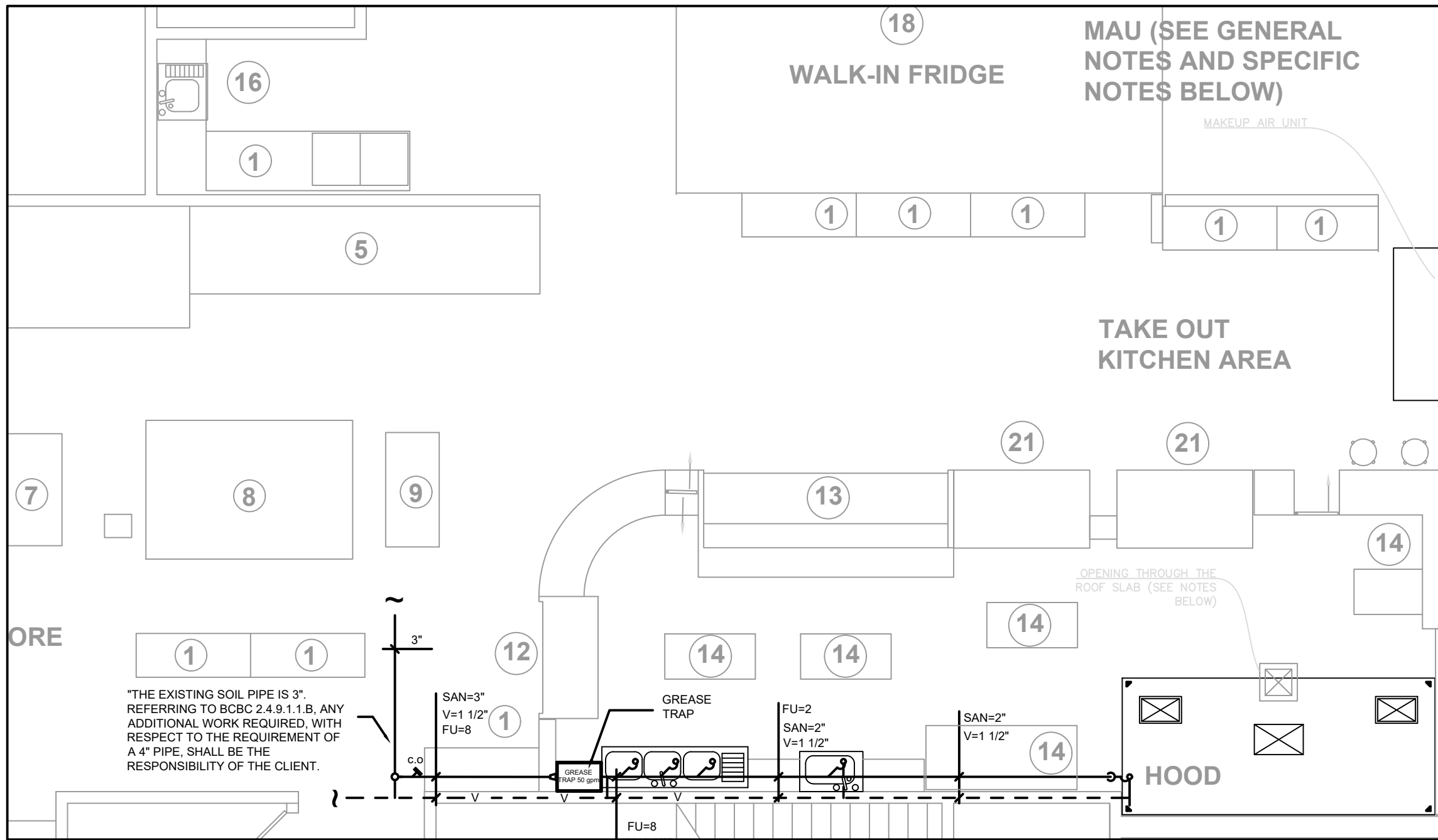
NOTES:

1. COORDINATE ALL CORE DRILLING LOCATIONS AND CHECK FOR EMBEDDED SERVICES WITH THE LANDLORD AND THE STRUCTURAL ENGINEER. X-RAY FLOOR AND FURNISH PRINTS OF THE RESULT FOR REVIEW BY THE LANDLORD AND THE STRUCTURAL ENGINEER.
2. FIRE STOP ALL PIPES AND DUCTS PENETRATING RATED WALLS/FLOORS WITH APPROVED AND ULC CAD 25115 LISTED MATERIAL. ACCEPTABLE MANUFACTURERS: "HILT" AND "3M". SEAL WATER TIGHT.
3. ALL MECHANICAL ITEMS SHALL BE INSTALLED AS PER THE MANUFACTURER'S RECOMMENDED INSTALLATION PRACTICES AND BE COMPLETE WITH VIBRATION ISOLATORS.

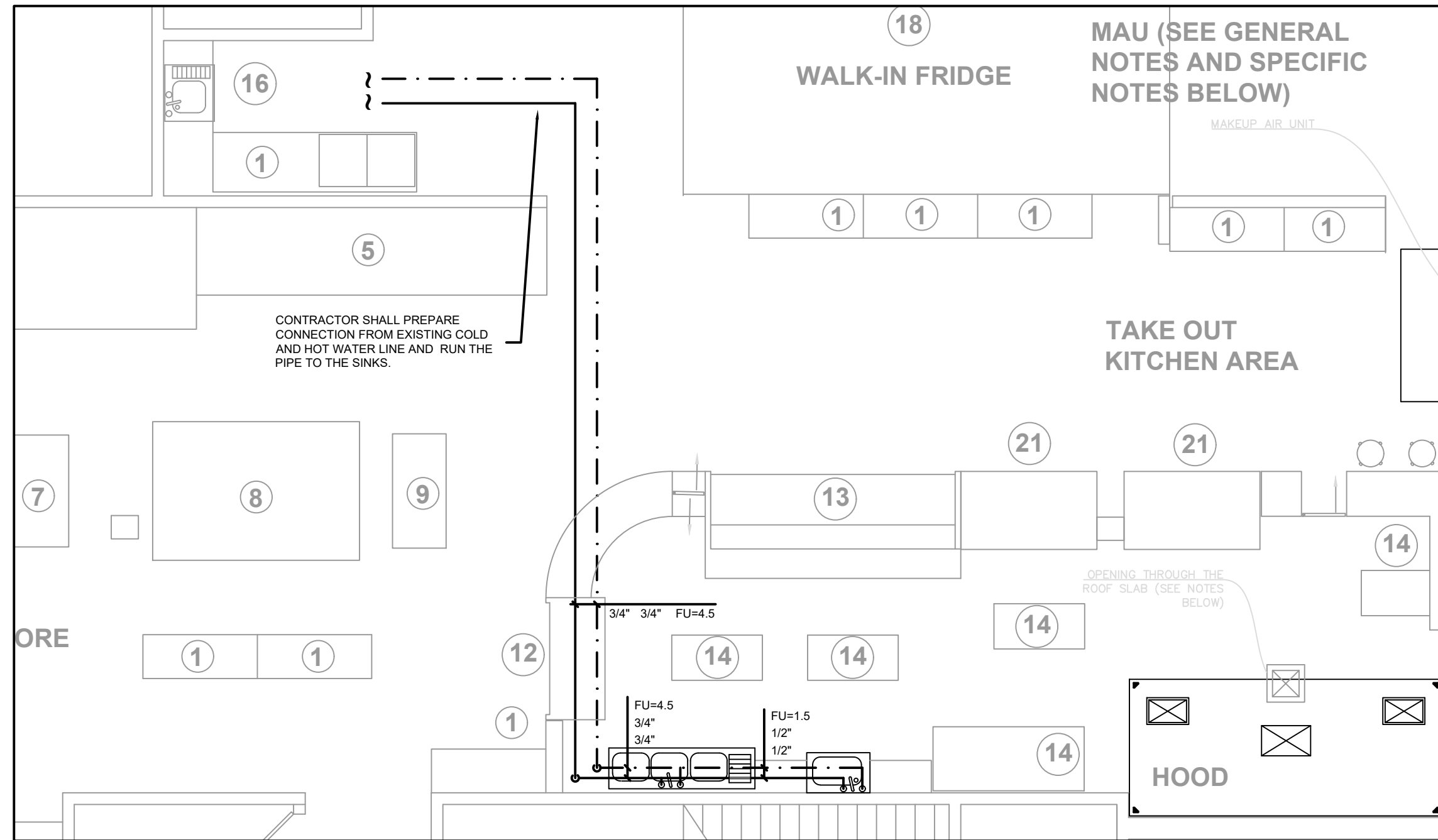


SCALE 1 : 75

GENERAL ARRANGEMENT



SANITARY LAYOUT



WATER SUPPLY LAYOUT

GENERAL NOTES:

1. SANITARY AND STORM DRAINAGE: CAST IRON PIPE AND FITTINGS TO CSA B70 - M1978. PVC-DWV ACCEPTABLE FOR BURIED INSTALLATION.
2. CONTRACTOR SHALL BE FAMILIAR WITH LOCAL CODE VARIANCES AND REQUIREMENTS.
3. ALL PLUMBING FIXTURES, WHERE INDICATED ON PLAN, SHALL BE SUPPLIED AND INSTALLED BY THIS CONTRACTOR, UNLESS NOTED OTHERWISE. FIXTURES SHALL BE PIPED WITH ALL NECESSARY APPURTENANCES (I.E. VENTS, SANITARY, P-TRAP, DCW/DHW CONNECTIONS, CLEAN-OUT
4. ALL CLEAN-OUTS SHALL BE PROVIDED AND ACCESSIBLE AS PER CODE.
5. CONTRACTOR TO LOCATE AND CONFIRM EXISTING SANITARY LINE CONNECTION AND CONFIRM THAT INVERTS AND GRADES CAN BE MET PRIOR TO COMMENCEMENT OF INSTALLATION. IF ANY INVERTS OR GRADES CAN NOT BE MET CONTRACTOR MUST NOTIFY ENGINEER IMMEDIATELY.

1	RH	09.08.20	FOR BP ACQUIS	MP	JH
0	RH	29.07.20	FOR BP ACQUIS	MP	JH
B	RH	15.07.20	FOR BP ACQUIS	MP	JH
A	RH	07.06.20	FOR BP ACQUIS	MP	JH
RV	BY	DATE	REVISION DETAILS	CHKD	APPR

CLIENT/ADDRESS: Mr. Jamshid Haidari
DAY TO DAY HALAL MARKET
2540 SHAUGHNESSY ST.
PORT COQUITLAM BC

MECHANICAL ENGINEER: MORTEZA POURBAKHT,
P.ENG. (BC & AB)

PETRO SADR CORPORATION
3110 580 Seaborne Ave.
Port Coquitlam BC V3B 8G8
WWW.Petrosadr.ca
T: 604 457 2000
F: +1604 457 2001
Cell: 604-446-1123
Morteza.Pourbakht@petrosadr.ca

THIS DRAWING IS THE PROPERTY OF PETRO SADR CORPORATION. IT IS TO BE USED ONLY IN CONNECTION WITH PERFORMANCE OF WORK BY THE CLIENT ADDRESSED HERE. REPRODUCTION IN WHOLE OR PART FOR ANY OTHER PURPOSE IS FORBIDDEN.

DRAWING TITLE: **COMMERCIAL KITCHEN PLUMBING LAYOUT**

PROJECT NAME: DAY TO DAY HALAL MARKET

PROJECT#: 2020065

DWG#: A101-P1

REV#: 1



1
P-1

SCALE 3/16" : 1' - 0"

	NAME / ADDITIONAL NOTE	SIGN IF REQUIRED BY PROCEDURES	APPROVED BY:	JH	SIG:
CLIENT CONTROL:	SIGN IF GOOD FOR CONSTRUCTION:		CHECKED BY:	MP	SIG:
CLIENT APPROVAL:			DRAWN BY:	RH	SIG:

SHAWNESSY ST.

ASHY CANADA

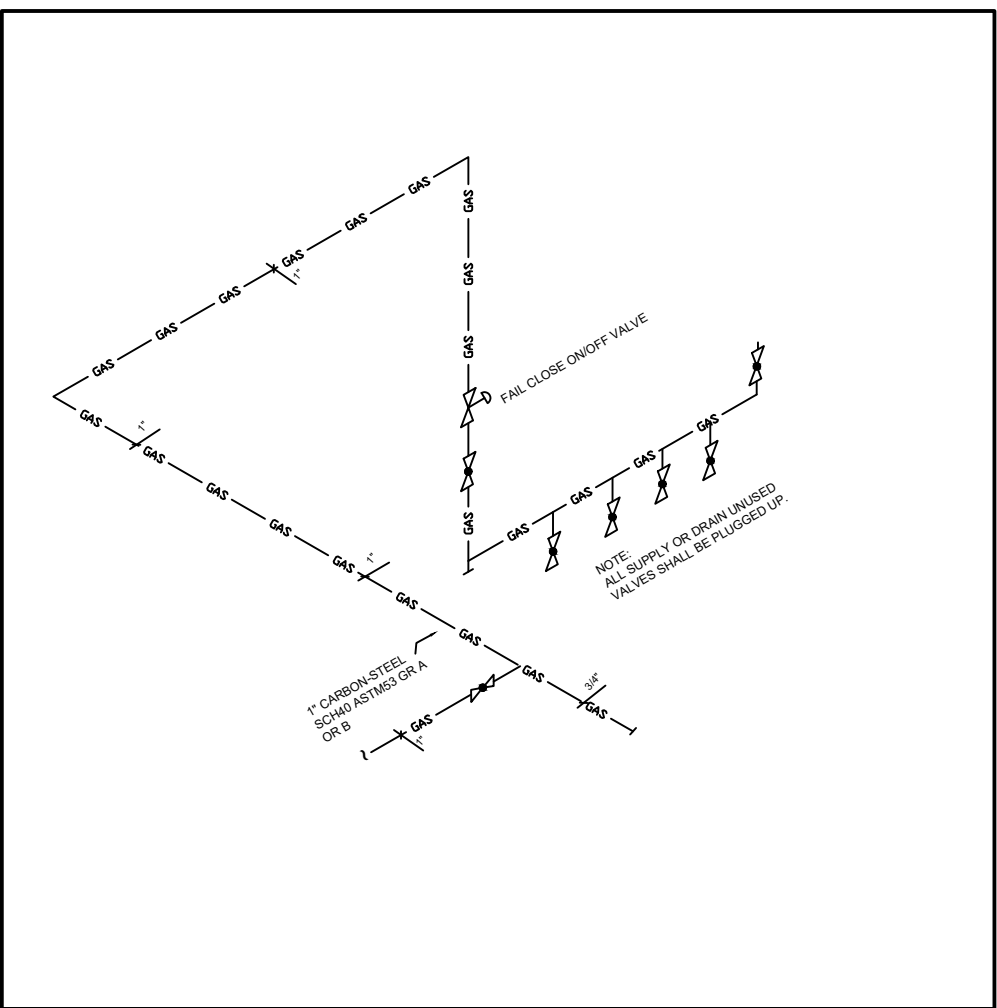
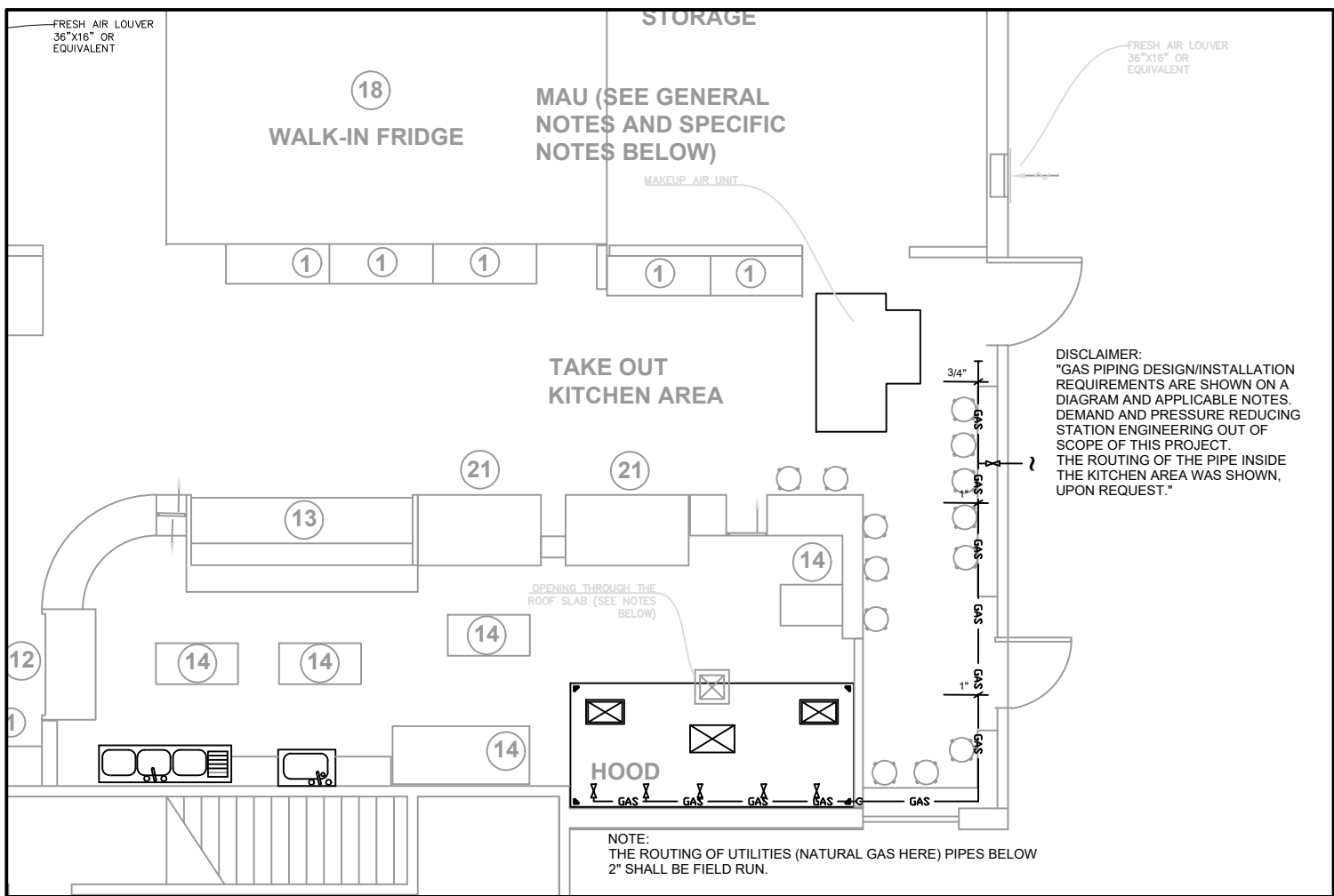
PARKING LOT

MC SHAWRVAND MARKET

WILSON AVE.

DONALD ST.

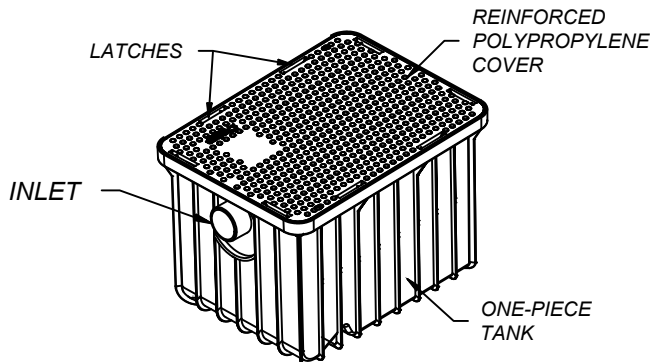
N



SCALE 1 : 100 GAS LAYOUT

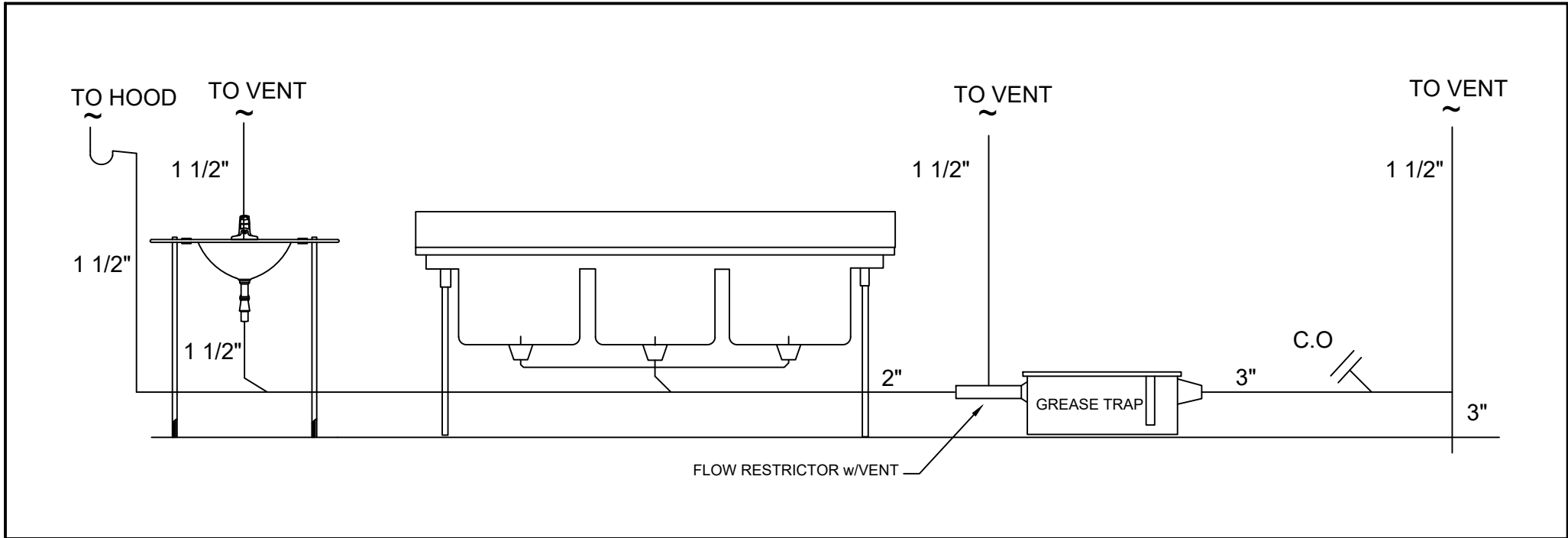
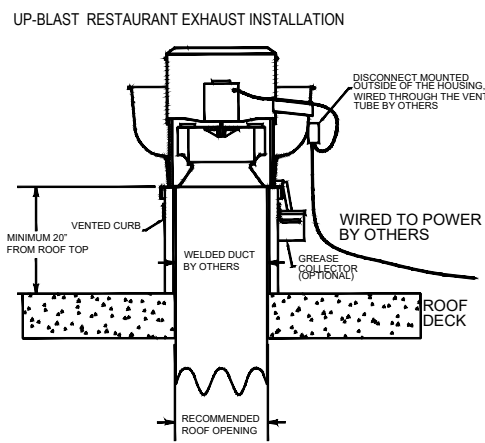
- ## GENERAL NOTES:
1. SANITARY AND STORM DRAINAGE: CAST IRON PIPE AND FITTINGS TO CSA B70 - HIPS P-V-C/DWV ACCEPTABLE FOR BURIED INSTALLATION.
 2. CONTRACTOR SHALL BE FAMILIAR WITH LOCAL CODE VARIANCES AND REQUIREMENTS.
 3. ALL PLUMBING FIXTURES, WHERE INDICATED ON PLANS, SHALL BE SUPPLIED AND INSTALLED BY THIS CONTRACTOR, UNLESS NOTED OTHERWISE. FIXTURES SHALL BE PEPP WITH ALL NECESSARY APPURTENANCES (I.E. VENTS, SANITARY, P-TRAP, DCW/DHW CONNECTIONS, CLEAN-OUT
 4. ALL CLEAN-OUTS SHALL BE PROVIDED AND ACCESSIBLE AS PER CODE.
 5. CONTRACTOR TO LOCATE AND CONFIRM EXISTING SANITARY LINE CONNECTION AND CONFIRM THAT INVERTS AND GRADES CAN BE MET PRIOR TO COMMENCEMENT OF INSTALLATION. IF ANY INVERTS OR GRADES CAN NOT BE MET CONTRACTOR MUST NOTIFY ENGINEER IMMEDIATELY.

UNIT NO.	SUPPLIER	UNIT MODEL #	GREASE CAPACITY (lb)	INLET & OUTLET SIZE (in.)	LENGTH (in.)	WIDTH (in.)	HEIGHT (in.)	NOTE
1	WATTS OR EQUIVALENT	WD-150	100	4"	32"	22"	22"	



MAKE-UP AIR UNIT INFORMATION												
UNIT NO.	FAN UNIT MODEL #	BLOWER	AIR FLOW CFM	ESP.	BLOWER OUTLET VELOCITY (RPM)	H.P.	B.H.P.	Ø	VOLT	MCA	WEIGHT (LBS.)	NOTE
2	HE-20	10/10	1600-2000	0.500	1568-1660	1.000	0.5-0.7	1	120	18	430	VARIABLE SPEED

EXHAUST FAN INFORMATION												
FAN UNIT NO.	TAG	FAN UNIT MODEL #	AIR FLOW CFM	ESP.	RPM	H.P.	B.H.P.	Ø	VOLT	FLA	WEIGHT (LBS.)	NOTE
2		ALX165-UD-100EC	851-3004	0.500	1500	1.000	0.2640	1	208	10.2/6.1	100	VARIABLE SPEED



- CONSTRUCTION GENERAL NOTES
1. GENERAL PROVISIONS
 - 1.1. CODES: CONFORM TO REQUIREMENTS OF THE LATEST BC BUILDING CODE, BURNABY BUILDING BY-LAW AND ALL OTHER AUTHORITIES HAVING JURISDICTION.
 - 1.2. ALL MATERIAL INSTALLED IN NON-COMBUSTIBLE BUILDINGS AND IN RETURN AIR CEILING PLENUMS SHALL MEET 25/50 FLAME/SMOKE SPREAD/DEVELOPMENT REQUIREMENTS.
 - 1.3. GENERAL SCOPE AND COORDINATION
 - 1.3.1. SITE AUDIT: PERFORM A THOROUGH SITE AUDIT OF THE EXISTING SYSTEM INCLUDING, BUT NOT LIMITED TO, EXISTING EQUIPMENT SIZE/LOCATION, DUCT SIZE/LOCATION, PLUMBING PIPE SIZE/LOCATION/INVERT PRIOR TO ORDERING MATERIAL AND COMMENCING WORK. VERIFY ALL EXISTING SERVICES THAT ARE BEING EXTENDED/RECONNECTED. VERIFY ROUTING OF ALL PROPOSED NEW SERVICES. REPORT TO ENGINEER WITH ANY DISCREPANCIES BETWEEN THE DRAWINGS AND SITE CONDITIONS. DETERMINE EXACT DIMENSIONS AND OTHER RESTRICTIVE CONDITIONS ON SITE, NOT FROM DRAWINGS.
 - 1.3.2. REPORT TO ENGINEER OF ANY EXISTING NON-CODE COMPLIANT INSTALLATIONS.
 - 1.3.3. BUILDING SYSTEM TIE-IN: COORDINATE WITH THE LANDLORD FOR ALL NECESSARY SHUTDOWN OF SYSTEMS. INCLUDE OVERTIME/AFTER-HOUR COSTS IN THE TENDER FOR SYSTEM TIE-INS AND WORK REQUIRED WITHIN AN ADJACENT TENANT SPACES.
 - 1.3.4. SITE UTILITY TIE-IN: COORDINATE WITH THE LANDLORD, UTILITY COMPANIES, AUTHORITIES, AND THE CONSULTANTS TO INTERRUPT, RE-ROUTE AND/OR CONNECT TO WATER, SEWER, WITH MINIMAL INTERRUPTIONS. CONTACT RESPECTIVE UTILITY COMPANY AND INFORM SERVICES INTERRUPTION TIMELINE TO PARTIES INVOLVED.
 - 1.3.5. NEW EQUIPMENT AND MATERIALS SHALL MATCH OR EXCEED BASE BUILDING STANDARDS. PROVIDE HIGHER STANDARD OF EQUIPMENT AND MATERIAL WHEN SPECIFIED. REMOVE UNACCEPTABLE MATERIALS AND INSTALL SUITABLE MATERIAL IN THEIR PLACE.
 - 1.3.6. PROVIDE ALL REQUIRED RIGGING, SUPPORT, DRILLING, APPROVED INSERTS, HANGERS AND AUXILIARY STRUCTURAL SUPPORT MEMBERS NECESSARY FOR MOUNTING AND HANGING EQUIPMENT.
 - 1.3.7. SUSPENSION FROM METAL DECK, OTHER DUCTS/PIPES, ONE HANGER FROM ANOTHER ARE NOT PERMITTED.
 2. SHEET METAL AND DUCTWORK
 - 2.1. PROVIDE DUCTWORK IN ACCORDANCE WITH ALL APPLICABLE CODES INCLUDING, BUT NOT LIMITED TO, LATEST SMACNA AND ASHRAE STANDARDS, LOCAL SEISMIC ZONE REQUIREMENTS, NFPA 90A AND NFPA 90B, AND NFPA 96 FOR KITCHEN EXHAUST DUCTS. DUCTS SHALL BE CONSTRUCTED TO MATCH PRESSURE RATING OF SPECIFIED EQUIPMENT. COORDINATE ALL INTERFERENCES WITH ALL OTHER TRADES PRIOR TO INSTALLATION.
 3. PLUMBING MATERIALS:
 - 3.1. PIPING TO COMPLY WITH CBCBC 2018 AND LOCAL BY LAWS AND ORDINANCES. DOMESTIC COLD HOT AND RE, -CIRCULATING WATER PIPING TO BE:
 - 3.1.1. ABOVE GRADE DISTRIBUTION PIPE TO BE TYPE L COPPER. FITTING TO BE WROUGHT COPPER AND JOINTS TO BE LEAD -FREE SOLDER USING FLUX.
 - 3.1.2. ABOVE / BELOW GRADE PEX PIPING TO BE UPONOR AQUAPEXA LISTED TO CSA -B 137.10 FOR PIPE SIZES 1-1/2" AND SMALLER. PEX, PIPING THAT IS BURIED IS TO BE ONE CONTINUOUS PIPE NO FITTINGS IN SLEEVE.
 - 3.1.3. SANITARY AND STORM PIPING TO BE: ABOVE GRADE DWV CAST IRON PIPE WITH IRON FITTINGS LISTED TO CSA B 70. JOINTS ARE TO BE MJ (MECHANICAL FASTENERS).
 4. PLUMBING SUPPORT
 - 4.1. HORIZONTAL SUPPORT LENGTH AND LIMITS BELOW. FOLLOW MANUFACTURERS RECOMMENDED INSTALLATION GUIDELINES WHICHEVER IS MORE RESTRICTIVE.
 - 4.2. CI PIPE 9'-10" (3 M) MAX AND AT EACH JOINT / HUB. 3'-3" (1 M) MAX WHEN ADJACENT MECHANICAL JOINTS LESS THAN 12".
 - 4.3. COPPER / BRASS PIPE 9'-10" (3 M) MAX WHEN HARD TEMPER AND >1". 8'-2" (2.5 M) MAX WHEN HARD TEMPER AND =<1". 8'-2" MAX WHEN SOFT (2.5 M).
 - 4.4. PEX / AL / PEX 3'-3" (1 M) MAX. PEX PLASTIC PIPE 2'-7" (0.8 M) MAX. 2 HANGERS THAT SUPPORT PIPING BY METAL RODS ARE TO HAVE THE FOLLOW SIZES: 1/4" ROD FOR 2" PIPE OR LESS. 5/16" ROD FOR 4" PIPE OR LESS 1/2" ROD FOR PIPE GREATER THAN 4".
 5. TESTING
 - 5.1. TESTING OF ALL MECHANICAL AND PLUMBING SYSTEMS ARE TO COMPLY WITH THE AHJ AND THE MINIMUM REQUIREMENTS SET OUT BELOW. HYDRAULIC TESTS ARE TO BE HELD OUT FOR A 24-HOUR PERIOD IN WHICH NO SIGNIFICANT PRESSURE DROP IS TO BE OBSERVED. IF THERE IS A LEAK, REPAIR AND RETEST.
 - 5.2. DOMESTIC WATER PIPING TO BE PRESSURIZED TO 150 PSIG AT SYSTEM LOW POINT.
 - 5.3. DRAINAGE PIPING TO BE PRESSURIZED BY A STANDING WATER COLUMN OF 10 FT MIN TO 25 FT MAX. BALL TEST TO BE USED TO TEST SLOPE AND BLOCKAGES.
 6. GREASE INTERCEPTORS (GI)
 - 6.1. PRIOR TO PURCHASING THE GREASE INTERCEPTOR, THE OWNER AND CONTRACTOR ARE TO CONFIRM IN WRITING TO THE ENGINEER THAT:
 - 6.2. VOLUME OF BASINS IS CORRECT AS STATED IN " GREASE INTERCEPTOR "TABLE,
 - 6.3. LOCATION AND SIZE OF GI IS ACCEPTABLE
 - 6.4. STRUCTURAL ENGINEER AND LANDLORD HAS APPROVED THE INSTALLATION,
 - 6.5. GI COMPLIES WITH BYLAW GVRD #268-2012 AS A MINIMUM. LARGER, SIZE IS AT THE DISCRETION OF THE ENGINEER
 - 6.6. CONFIRM WITH AHJ (AUTHORITY HAVING JURISDICTION) ABOUT GPM FOR DISH GLASS WASHER AND ESPRESSO MACHINE OCCASIONALLY THE AHJ WILL HAVE DIFFERENT GPM.
 - 6.7. 4" SAMPLING TEE DOWNSTREAM OF GI AND BEFORE OTHER CONNECTIONS PORT TO BE VERTICALLY PERPENDICULAR AND DIRECTLY ABOVE PIPE. CLEAN OUTS AND VENTING ON BOTH SIDES.
 - 6.8. GREASE TRAP TO BE CERTIFIED TO CSA B 481. ALTERNATIVELY, PDI G 101, IAPMO / ANSI Z 1001 CONFIRM WITH AHJ.

	NAME / ADDITIONAL NOTE	SIGN IF REQUIRED BY PROCEDURES	APPROVED BY:	JH	SIG:
CLIENT CONTROL:	SIGN IF GOOD FOR CONSTRUCTION:		CHECKED BY:	MP	SIG:
CLIENT APPROVAL:			DRAWN BY:	RH	SIG:

CLIENT/LOT/ADDRESS: Mr. Jamshid Haidari
DAY TO DAY HALAL MARKET
2540 SHAUGHNESSY ST.
PORT COQUITLAM BC

MECHANICAL ENGINEER: MORTEZA POURBAKHT,
P.ENG. (BC & AB)

PETRO SADR CORPORATION
3110 580 Seaborne Ave.
Port Coquitlam BC V3B 8G8
WWW.Petrosadr.ca
T:604 457 2000
F:+1604 457 2001
Cell:604-446-1123
Morteza.Pourbakhth@petrosadr.ca

THIS DRAWING IS THE PROPERTY OF PETRO SADR CORPORATION. IT IS TO BE USED ONLY IN CONNECTION WITH PERFORMANCE OF WORK BY THE CLIENT ADDRESSED HERE. REPRODUCTION IN WHOLE OR PART FOR ANY OTHER PURPOSE IS FORBIDDEN.

DRAWING TITLE:



GENERAL NOTES AND SPECIFICATIONS

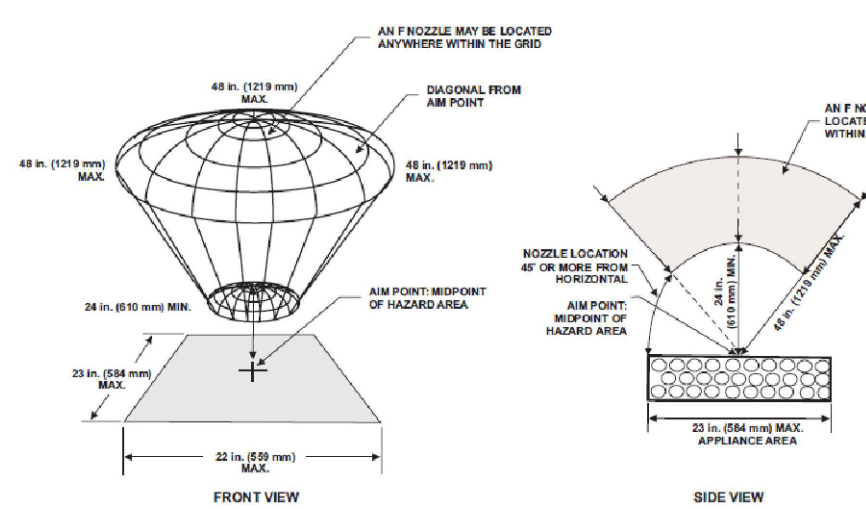
PROJECT NAME:	DAY TO DAY HALAL MARKET
PROJECT#:	2020065
DWG#:	A101-P2
REV#:	1

Equipment specification		
Type	Direct Gas Fire Heated	
Fan Specifications	Design capacity 1600 ~ 2000 CFM	
Heater Specifications	Approx. capacity 90000 BTUs	
Supply Motor Specifications	Fuel natural gas Example: 1.000 HP, 1 Phase, 115 V, 60Hz	
Air Intake/Louver	Sloped/Flat filtered intake 2" Metal Mesh Filters Minimum 24"x26" or equal.	
Supply Motor Specifications	Insulation class H or, if approved by AHJ, F	
Exhaust Fan (Note 21)	High Speed Direct Drive Centrifugal Upblast Exhaust Fan Roof mounted with design capacity 851 ~ 3004 CFM	
Roof Curb	Curb base Vendor to specify	

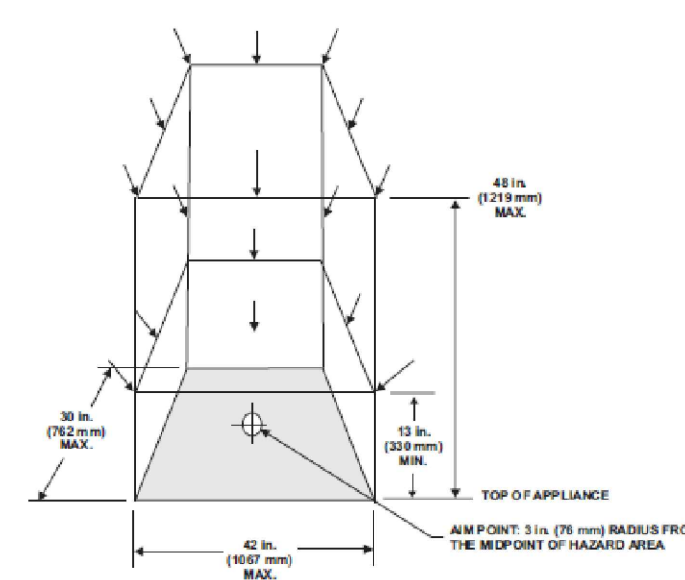
Remark: The above size of motors are indicative. Contractor to advise Electrical tech.

Kitchen Fire Suppression specifications + Rough Estimate			
Item	Specifications	Qty.	
Piping and fittings	Pipe 1/2" , Tee 1/2"~12 pcs, Elbow 1/2"~28 pcs, sch. 40 black steel or CS some 50 feet	TBC	
Control system	KIDDE XV or equivalent	1	
Cylinder & valve assembly	KIDDE, WHDR-400 or equivalent, 175 PSI, DOT 4BW or eq. steel	1 + 1	
Nozzles	KIDDE or equal, 3/8" NPT, 6 pcs ADP (1g) & 2 pcs R (4g) + 3 pcs F (2g)	11	
Remote manual pull station	REMOTE MANUAL RELEASE, KIP/N 875572 (XV ONLY)	1	
Fusible link detection equipment	Standard response thermo-bulb 5 pcs + 1/2" tubes + 1/16" cable	5 + TBC	
Automatic gas shut-off valve	P/N 60-9197XXX-00 87-120099-001 KIDDE or equivalent	1	
Corner pulleys and accessories	matching the selected brand of automatic fusible links	as needed	

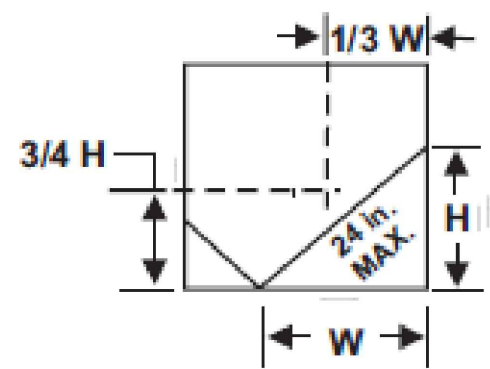
Remark: Above estimated quantities for main components are provided just to give the Client a rough idea of the cost. The contractor need to have its own precise estimate of materials and shall comply to the specifications.



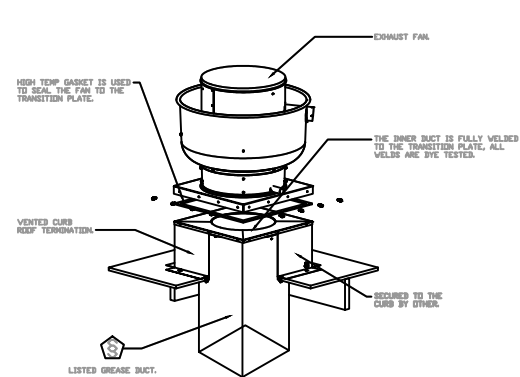
F NOZZLE INSTALLATION FOR CHARBROILER (KEBOB GRILL)



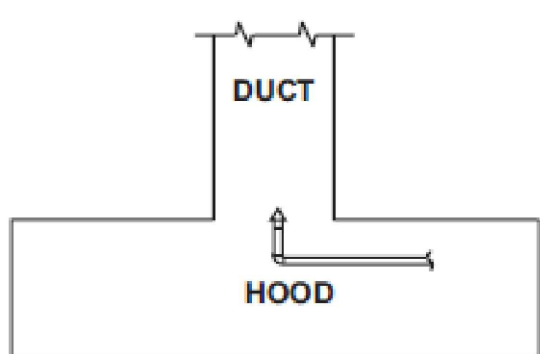
ADP NOZZLE INSTALLATION FOR GRIDDLE



ADP NOZZLE INSTALLATION IN PLENUM



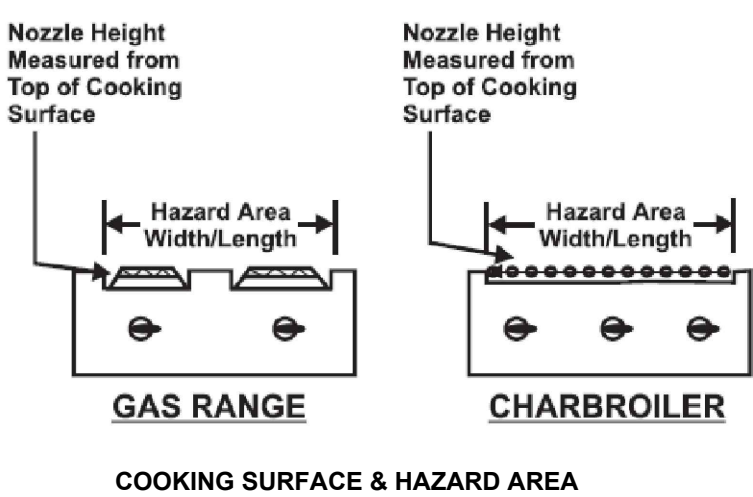
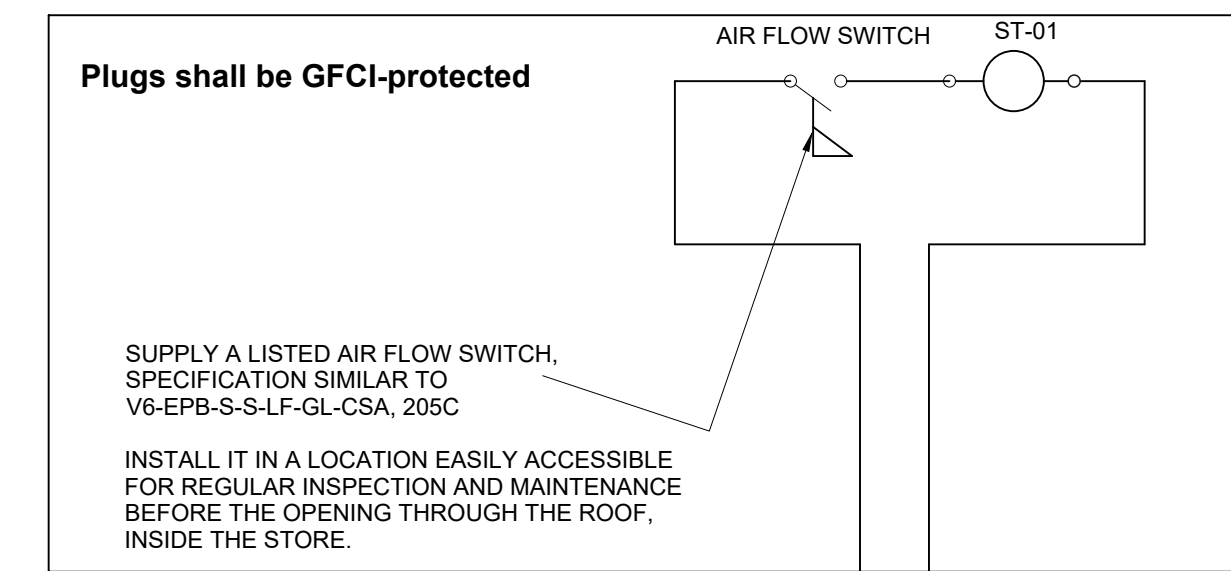
TYPICAL FAN COMPONENTS AND INSTALLATION (CURB TO BE EXTENDED AS SHOWN IN THE SECTION BELOW)



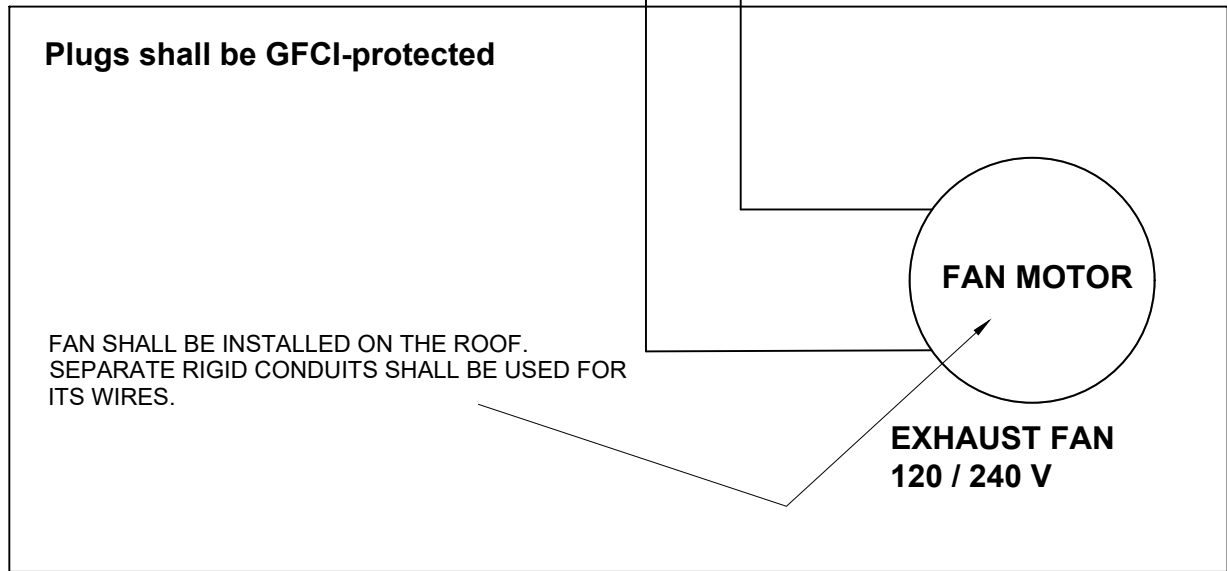
ADP NOZZLE INSTALLATION IN VERTICAL SECTIONS OF EXHAUST DUCT

- NOTES FOR INSTALLATION DEEP FRYERS:
- FOR FIRE SAFETY REASONS WATER HANDLING SHOULD BE AVOIDED IN THE PROXIMITY OF DEEP-FRYERS AND COVER PROTECTION IS NEEDED TO PREVENT SPITTING.
 - NO FIRE SPRINKLERS ARE PERMITTED OVER THE DEEP-FRYING AREA.
 - WHILE OPERATION THE DEEP-FRYER THE WEARING OF APRONS, GLOVES AND SOCKS MADE FROM ARTIFICIAL FIBERS SHOULD BE AVOIDED.
 - UNDER NO CIRCUMSTANCES SHOULD WATER BE USED TO EXTINGUISH A FIRE RESULTING FROM THE DEEP-FRYER, AS THIS CAUSES AN EXPLOSIVE EVAPORATION OF THE WATER FROM THE HOT DEEP-FRYER MEDIUM, LEADING TO VIOLET EXPLOSION (FAT EXPLOSION), ACES OVERHEAD.

- IMPORTANT NOTES:
- THE HOOD, DUCTS, AND THE EXHAUST FAN SHALL HAVE A CLEARANCE OF AT LEAST 457 MM (18 IN.) TO COMBUSTIBLE MATERIAL, 76 MM (3 IN.) TO LIMITED COMBUSTIBLE MATERIAL, AND 0 TO NON-COMBUSTIBLE MATERIAL.
 - 1" LAYER OF INSULATION FACTORY INSTALLED IN INTERNAL BACK STANDOFF. MEETS 0 INCH REQUIREMENTS FOR CLEARANCE TO COMBUSTIBLE SURFACES.
 - ALTERNATIVELY USE PLATES SPECIFIED IN NOTE 13 PLUS INSULATION SUCH AS UNIFRAX FRYEWWRAP ELITE 1.5 OR EQUIVALENT TO COMBUSTIBLE SURFACES SUCH AS THE WALL OR SHELVES IN PROXIMITY OF FIRE HAZARD.
 - USE ONE SIZE THICKER PLATE FOR SURFACES OVERHEAD.

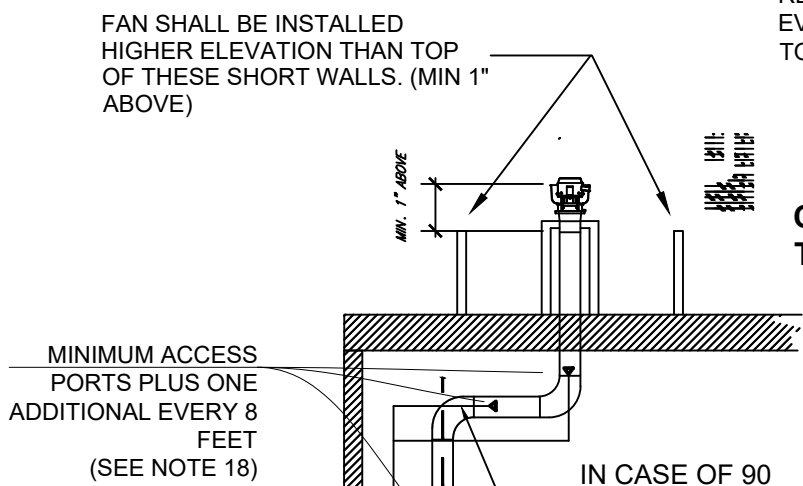
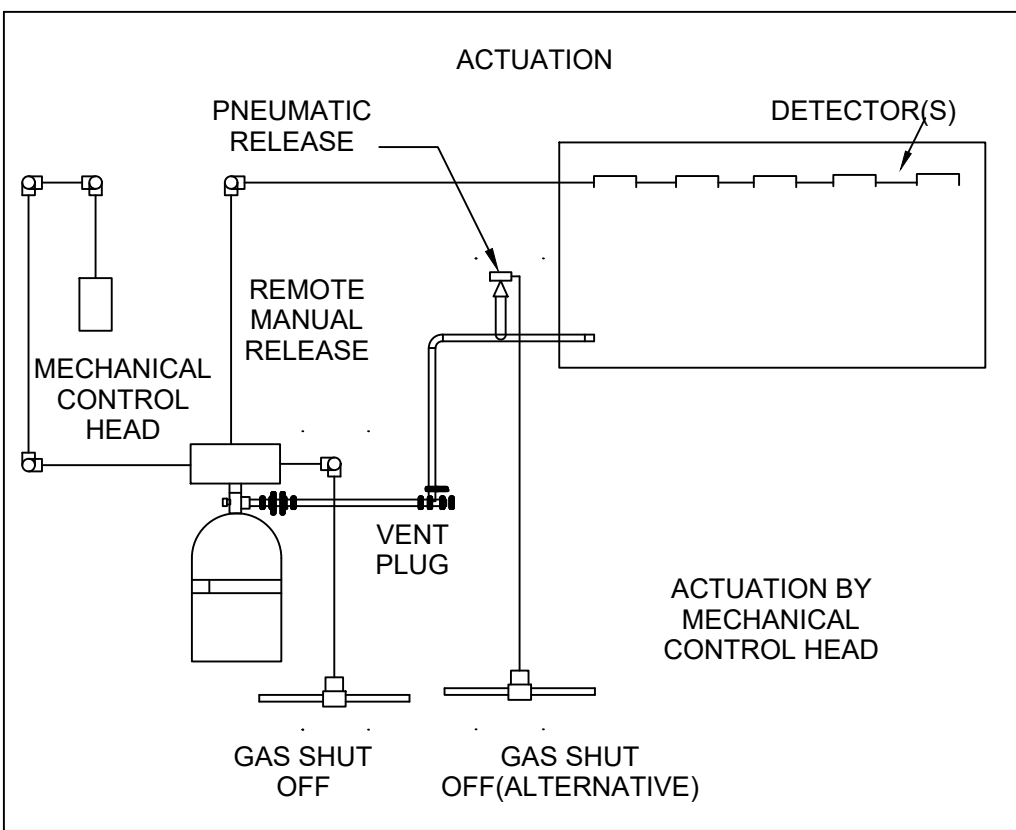
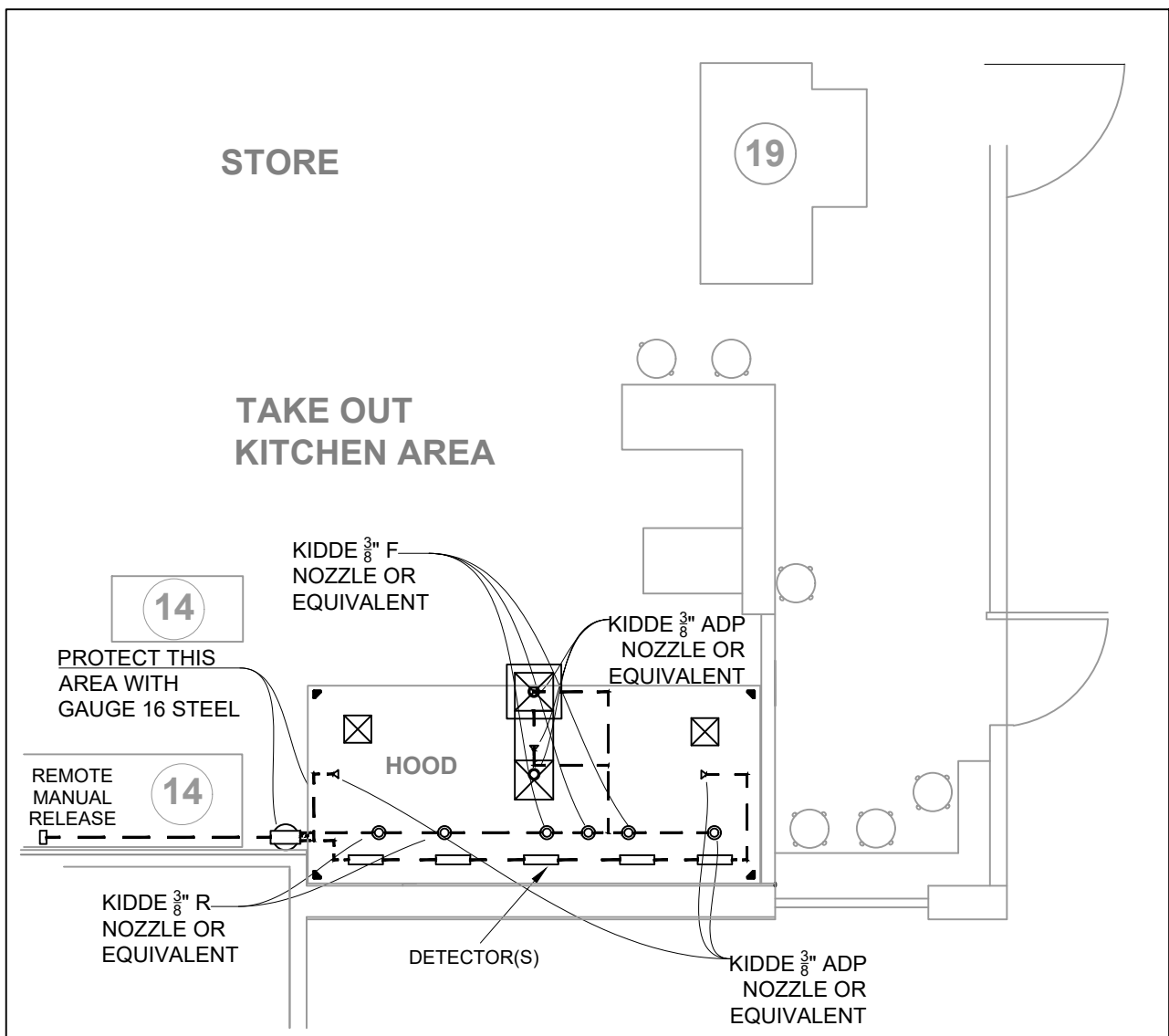


- NOTE 1: ST-01 shall actuate a fail-close gas valve at take-out kitchen area.
- Fan switch (DS3) and relay (ST-01) coil shall be readily accessible within reach at the area and external to the ventilation duct or hood.
- NOTE 2: Wires should be checked by an authorized electrician (min. AWG Alu.)



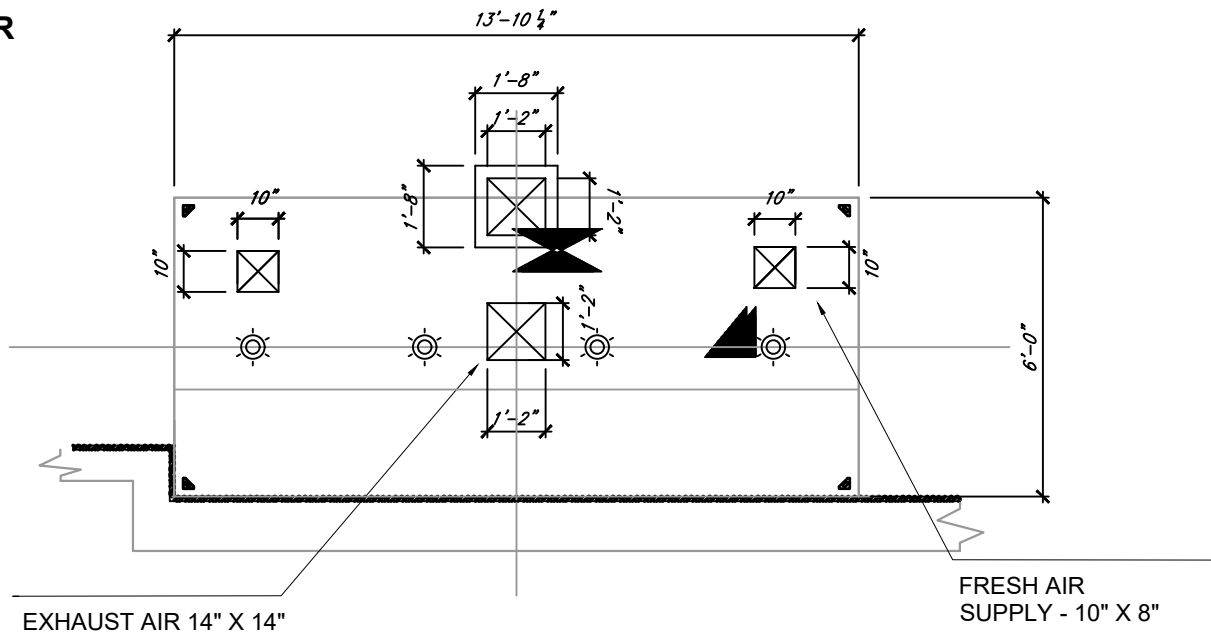
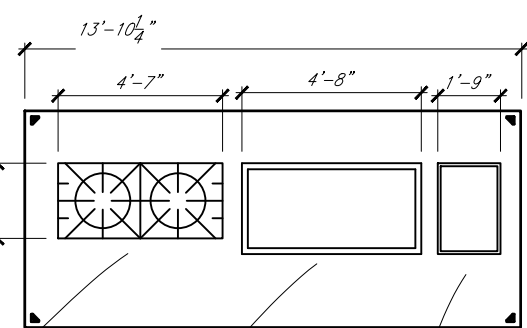
OPTIONAL TYPICAL ELECTRICAL INTERLOCK SINGLE LINE DIAGRAM

SEE "NOTE ABOUT COORDINATION WITH DIVISION 16" ON SHEET 101-M1



SECTION A - EXHAUST SYSTEM & APPLIANCES TYPICAL ARRANGEMENT

CURBS ARE SHOWN AS TYPICAL ILLUSTRATIONS, REFER TO NOTES AND DETAILS FOR SPECIFIC REQUIREMENTS.



HOOD LIGHTS & WALL INSULATION TYPICAL ARRANGEMENT

	NAME / ADDITIONAL NOTE	SIGN IF REQUIRED BY PROCEDURES	APPROVED BY:	JH	SIG:
CLIENT CONTROL:	SIGN IF GOOD FOR CONSTRUCTION:		CHECKED BY:	MP	SIG:
CLIENT APPROVAL:			DRAWN BY:	RH	SIG:

GENERAL NOTES:

- All material and installation requirements of NFPA 96 and NFPA 17A shall be followed.
- Performance requirements shall meet UL 300 and all ordering appliances/materials shall be UL-C certified.
- The bracket of the cylinder shall be securely tied to the framing of the wall or structure.
- Electrical control head is alternatively allowed conditioned that, in case of lack of reliable automatic emergency power for it, the nearby appliances electrical power shall be interlocked to the failure of control device, so that in such cases the electrical power or fuel supply shall be shut down at once. In this project (2019-2020) the assumption is that no reliable automatic emergency power will be supplied. Therefore a fail-close gas valve and a fail-open relay for shutting down the gas and electricity (to heat sources in kitchen area) are obligatory.
- Manual actuation from pull station shall also be interlocked with power or gas shut down of appliances. Power shutdown might be done through the control head or through a microswitch installed on the discharge pipe. Pull station shall be interlocked with the Extinguishing System of the appliances, to activate it firstly.
- The requirements of clearances including of clause 4.2 of NFPA 96 shall have been fulfilled in installation.
- Alternatively, equivalent sizes of Stainless Steel pipe such as ASTM A312-TP304, EPW, 40S or equivalent tubing might be used.
- Any other material including microswitches necessary for compliance of installation to codes shall be supplied.
- Adequate flexibility shall be provided for piping.
- The contractor shall use adequate bracing to seismically support the makeup air unit, hood, and duct.
- Design flow might be increased up to 1700 CFM for MUA unit and up to 1530 CFM for the exhaust fan with the current design.
- The ducts and main parts in contact with hot flue gas and likely to be subject to fire shall be constructed of and be supported by steel not less than 1.21 mm or 0.048 in. (No. 18 MSG) in thickness, stainless steel not less than 0.51 mm or 0.02 in. (No. 20 MSG) in thickness, or other approved material of equivalent strength and fire and corrosion resistance.
- All seams, joints, and penetrations of the hood enclosure that direct and capture grease-laden vapors and exhaust gases shall have a liquidtight continuous external weld to the hood's lower outermost perimeter.
- Mech filters shall not be used unless evaluated as an integral part of a listed exhaust hood or listed in conjunction with a primary filter in accordance with ANSI/ULC 1046.
- All ducts shall be installed with a minimum 2 percent slope towards the hood plenum.
- Drains shall be provided at low points in horizontal ducts, when needed.
- Signs stating the following shall be placed on all access panels: "ACCESS PANEL - DO NOT OBSTRUCT". See Section A. Despite what is shown here, all internal walls of the exhaust duct shall be accessible for cleaning as well as all equipment shall be accessible for maintenance.
- Ovens shall be securely placed under the hood. In case of rolling feet, they need to be securely locked to the ground or the wall by lockable ralls, chains, anchored C-channels or similar.
- Rooftop terminations shall be arranged with or provided with the following:
 - A minimum of 3 m (10 ft) of horizontal clearance from the outlet to property lines and air intakes.
 - A minimum of 1.5 m (5 ft) of horizontal clearance from the outlet (fan housing) to any combustible structure.
 - A vertical separation of 0.92 m (3 ft) below any exhaust outlets for air intakes within 3 m (10 ft) of the exhaust outlet.
- In case of ordering a fan with the motor surrounded by airstream, it shall be hinged and supplied with flexible weatherproof electrical cable and service hold-open retainers. It shall be listed in accordance with UL 702 and supplied with an access opening of a minimum 76 mm by 127 mm (3 in by 5 in) or a circular diameter of 101 mm (4 in.) on the curvature of the outer fan housing to allow for cleaning and inspection of the fan blades.
- A placard shall be conspicuously placed near each extinguisher that states the fire protection system shall be activated prior to using the fire extinguisher. That is more applicable to regular dry chemical extinguishers, if placed close to the kitchen area.
- A six (6) liter UL-C approved class K extinguisher to be securely placed at approximate location shown on the drawing, readily visible and accessible.
- The gas valve shall be of the type that requires manual resetting prior to fuel being restored.
- Fire protection system ordered shall conform to:
 - ANSI/UL 300, Fire Testing of Fire Extinguishing Systems for Protection of Commercial Cooking Equipment, or
 - ULC/ORD-C1254.6, Fire Testing of Restaurant Cooking Area Fire Extinguishing System Units.
- The structural ceiling looked like a concrete roof. In case the Contractor finds out it being of combustible materials assembly (including insulation) , shall consult with the engineer for details of penetration of the exhaust duct.
- A 50 GPM Grease Interceptor is required for the drains of take-out kitchen area.

1	RH	09.08.20	FOR BP ACQUIS	MP	JH
0	RH	29.07.20	FOR BP ACQUIS	MP	JH
B	RH	15.07.20	FOR BP ACQUIS	MP	JH
A	RH	07.06.20	FOR BP ACQUIS	MP	JH
RV	BY	DATE	REVISION DETAILS	CHKD	APPR

CLIENT/OWNER: Mr. Jamshid Haidari
DAY TO DAY HALAL MARKET
2540 SHAUGHNESSY ST.
PORT COQUITLAM BC

MECHANICAL ENGINEER: MORTEZA POURBAKHT,
P.ENG. (BC & AB)

3110 580 Seaborne Ave.
Port Coquitlam BC V3B 8G8
WWW.Petrosadr.ca
T:604 457 2000
F:+1604 457 2001
Cell:604-446-1123
Morteza.Pourbakht@petrosadr.ca

THIS DRAWING IS THE PROPERTY OF PETRO SADR CORPORATION. IT IS TO BE USED ONLY IN CONNECTION WITH PERFORMANCE OF WORK BY THE CLIENT ADDRESSED HERE. REPRODUCTION IN WHOLE OR PART FOR ANY OTHER PURPOSE IS FORBIDDEN.

DRAWING TITLE: **FIRE SUPPRESSION & SYSTEM**

PROJECT NAME: DAY TO DAY HALAL MARKET

PROJECT#: 2020065

DWG#: A101-M1

REV#: 1

