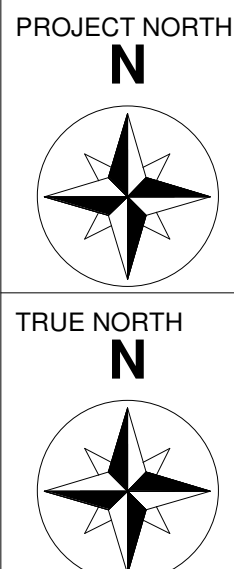
[illegible]

SEAL



CLASS 1 RESTAURANT

PROJECT ADDRESS

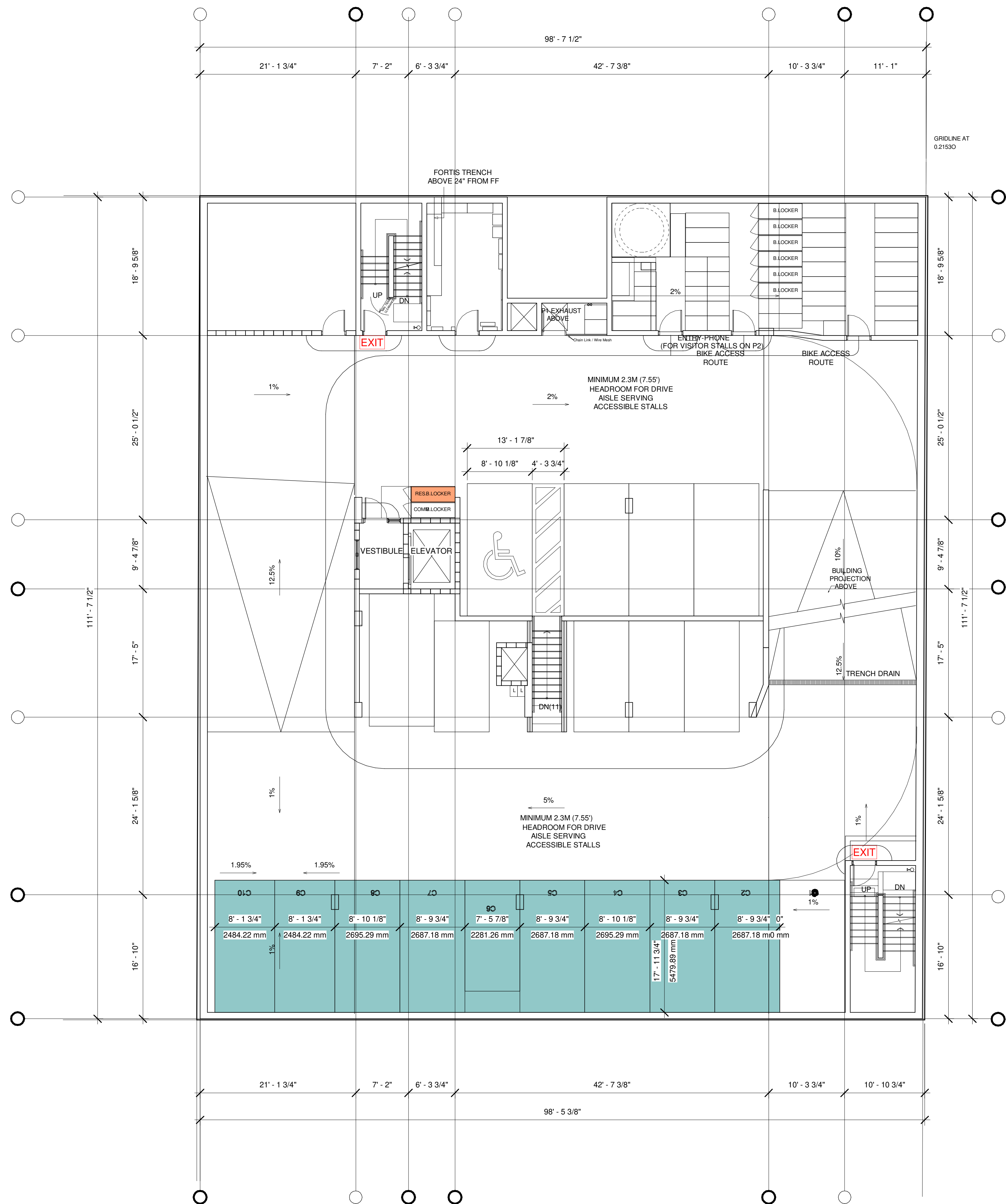
2101 EAST HASTINGS VANCOUVER, BC

SHEET TITLE



PARKADE PLAN

DRAWN BY	MS
CHECKED BY	Checker
DATE	17/02/2023
SCALE	1/8" = 1'-0"
PROJECT NO.	222-258

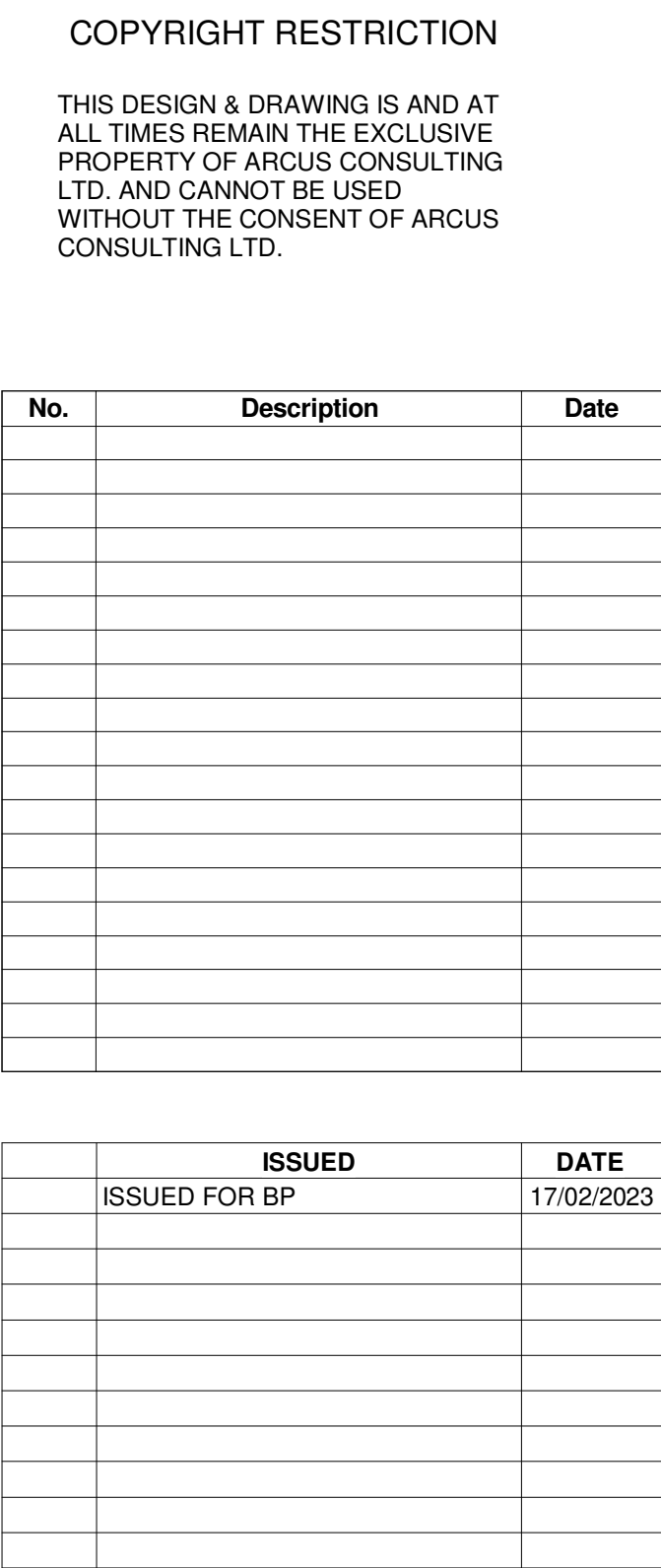
A1.03


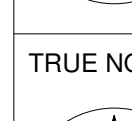


COLOUR LEGEND

-  CLASS A BICYCLE STORAGE PROVIDED FOR RESTAURANT
-  RESTAURANT VEHICLE STALLS

1 PARKADE PLAN
1/8" = 1'-0"

[illegible]

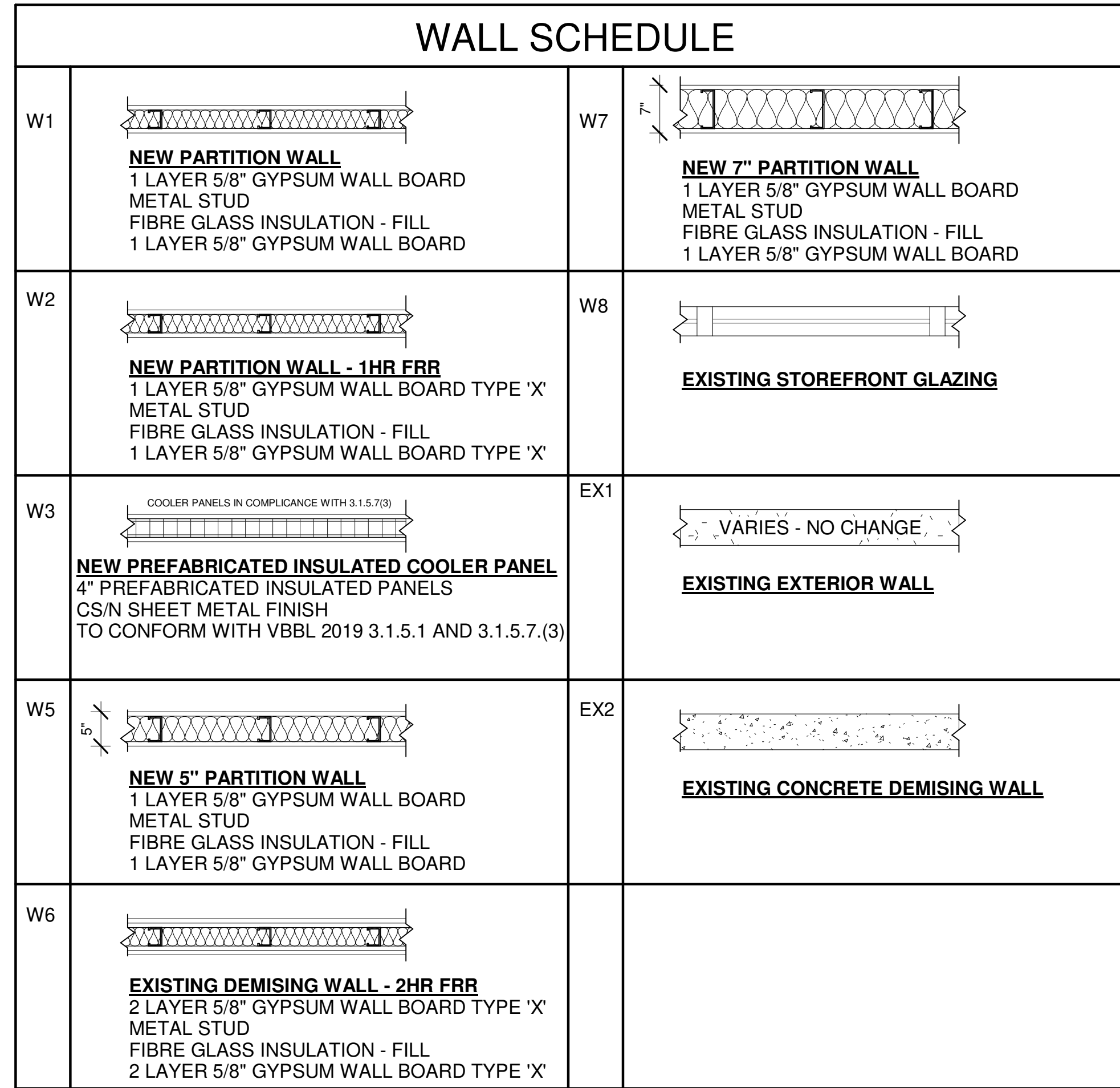
SEAL	<p>PROJECT NORTH</p>  <p>A compass rose with eight points. The top point is a solid black arrowhead. The bottom point is a solid black arrowhead. The left and right points are open arrowheads. The top-left and top-right points are open arrowheads. The bottom-left and bottom-right points are open arrowheads. A large, bold, black 'N' is positioned to the right of the rose.</p>
	<p>TRUE NORTH</p>  <p>A compass rose with eight points. The top point is a solid black arrowhead. The bottom point is a solid black arrowhead. The left and right points are open arrowheads. The top-left and top-right points are open arrowheads. The bottom-left and bottom-right points are open arrowheads. A large, bold, black 'N' is positioned to the right of the rose.</p>

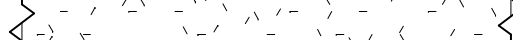


PROPOSED FLOOR PLAN

DRAWN BY	MS	A2.01
CHECKED BY	Checker	
DATE	17/02/2023	
SCALE	As indicated	
PROJECT NO.	222-258	

A2.01



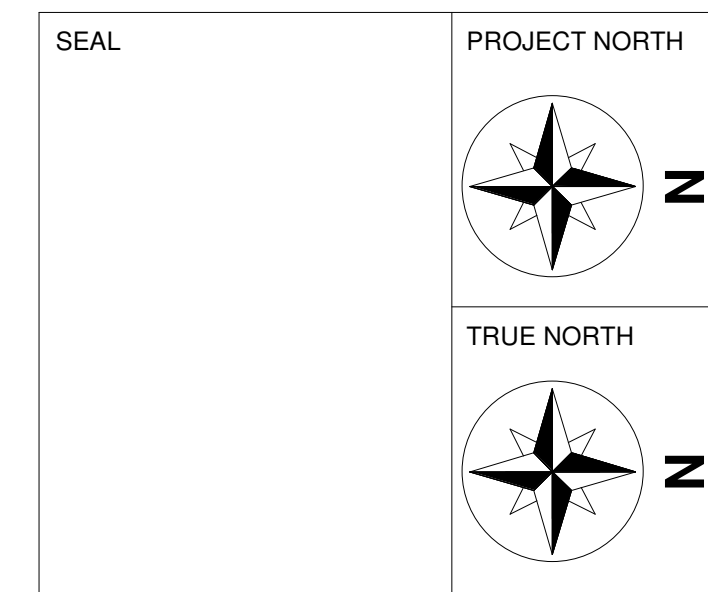
FLOOR SCHEDULE	
F1	 <p><u>EXISTING SUSPENDED CONCRETE SLAB</u> FFR 2 HR 6" CONCRETE SLAB</p>

EXIT CORRIDOR
(SEE SITE PLAN FOR
SECONDARY PATH
OF TRAVEL)

EQUIPMENT LIST (SEE MECHANICAL FOR DETAILS)	
TAG	EQUIPMENT TYPE
1	OVEN
2	GRILL
3	COOKTOP
4	FRYER
5	HOTTOP
6	TANDOORI OVEN
7	UNDER COUNTER COOLER
8	PREP SINK
9	HAND WASH
10	DISH PIT SINK
11	DISHWASHER
12	MOP SINK
13	GLASS WASHER
14	BEER FRIDGE
15	ICE WELL
16	RINSER
17	UNDER COUNTER ICE MACHINE
18	UNDER COUNTER FREEZER
19	HOOD

[illegible]

CONSULTANT



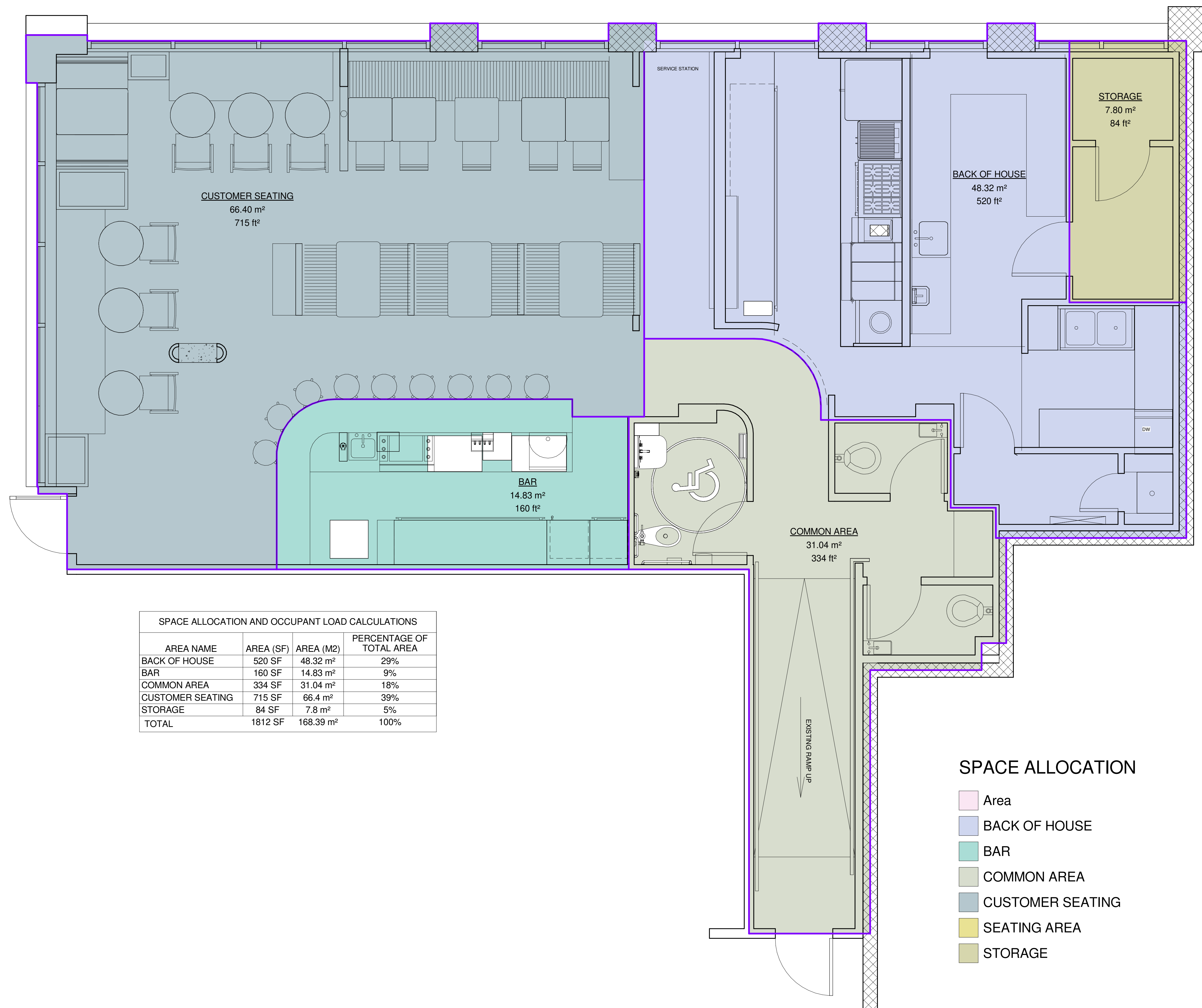
PROJECT

CLASS 1 RESTAURANT

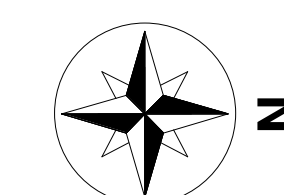
PROJECT ADDRESS

2101 EAST HASTINGS VANCOUVER, BC

SHEET TITLE	
PROPOSED SPACE ALLOCATION PLAN	
DRAWN BY	MS
CHECKED BY	Checker
DATE	17/02/2023
SCALE	3/8" = 1'-0"
PROJECT NO.	222-258

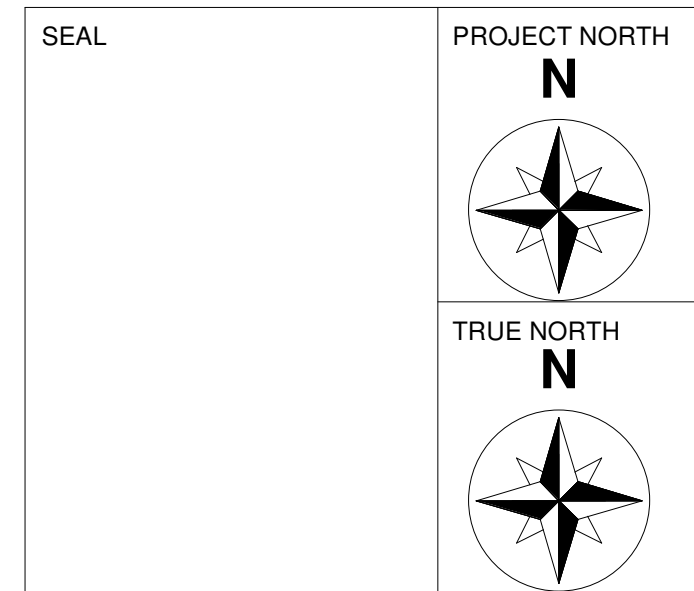


1 PROPOSED SPACE ALLOCATION PLAN
3/8" = 1'-0"



[illegible]

CONSULTANT



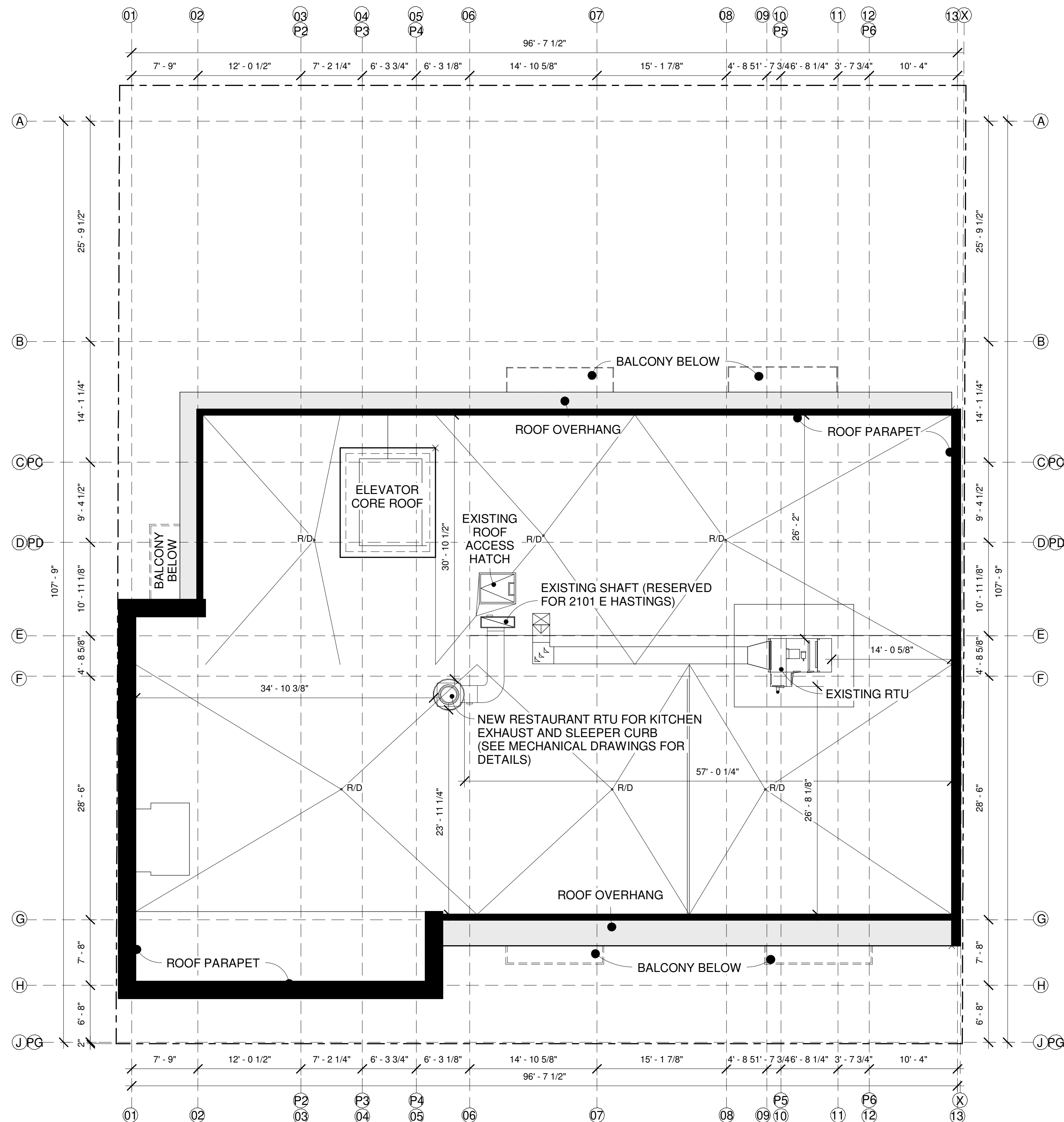
PROJECT

CLASS 1 RESTAURANT

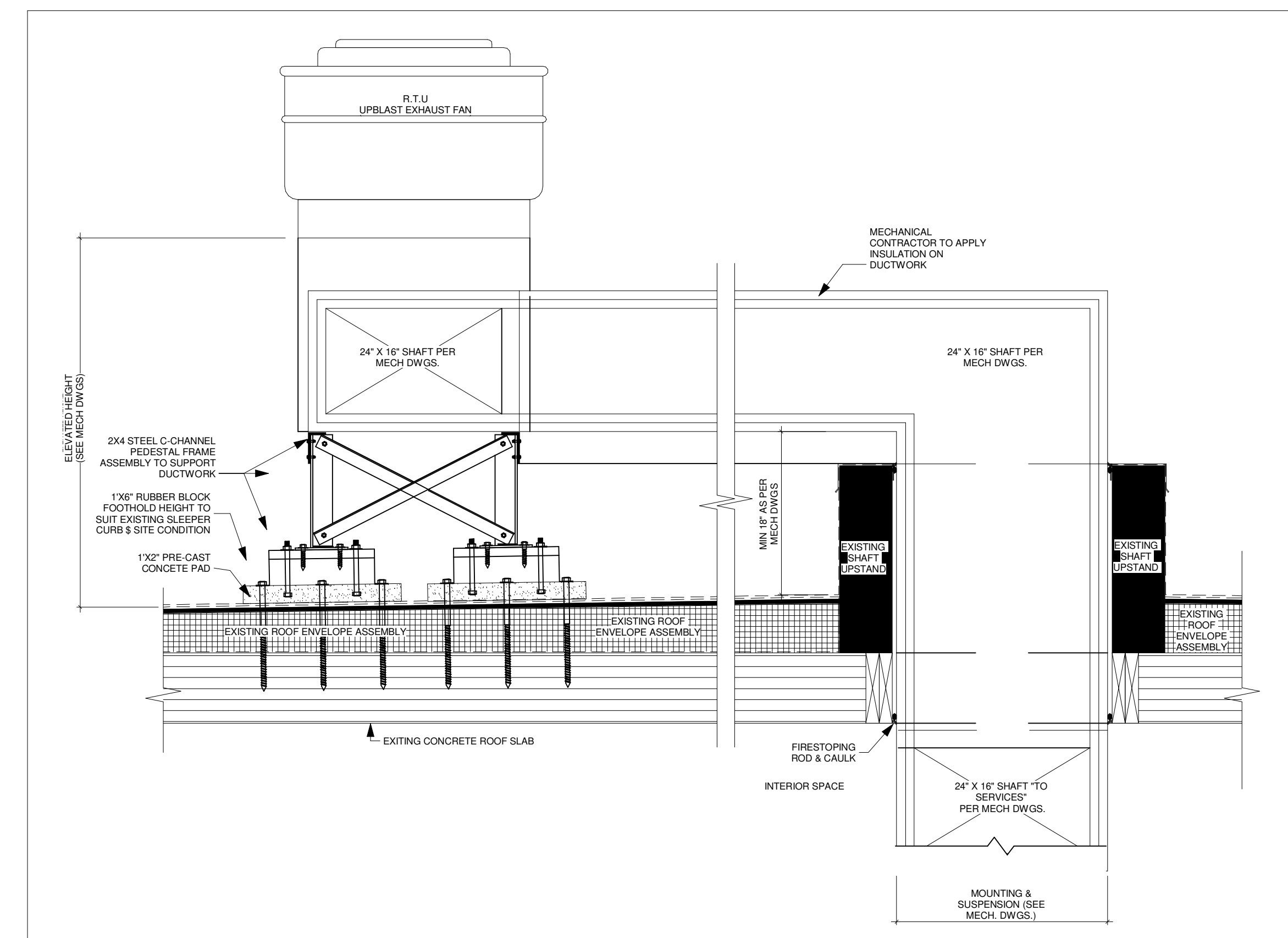
PROJECT ADDRESS

2101 EAST HASTINGS VANCOUVER, BC

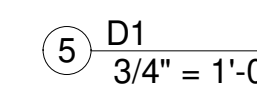
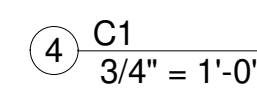
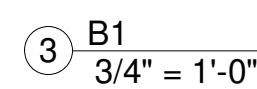
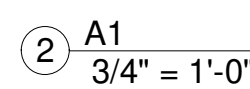
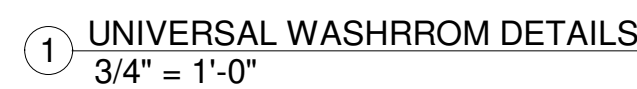
SHEET TITLE		<div style="font-size: 48px; font-weight: bold; text-align: center;">A2.04</div>
ROOF PLAN		
DRAWN BY	MS	
CHECKED BY	Checker	
DATE	17/02/2023	
SCALE	As indicated	
PROJECT NO.	222-258	



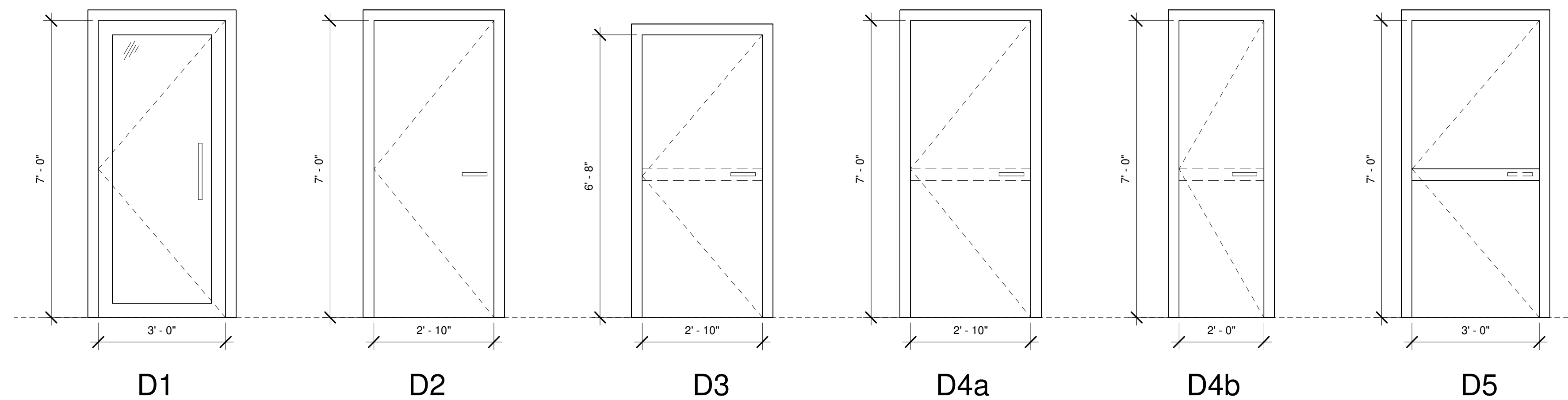
1 ROOF PLAN
1/8" = 1'-0"



② ROOF TOP UNIT DETAIL
1" = 1'-0"



Door Schedule							
DOOR NUMBER	Door				FIRE RATING	HARDWARE	COMMENTS
	WIDTH	HEIGHT	MATERIAL	FINISH			
D1	3' - 0"	7' - 0"	GLASS	GLASS		LOCK SET	EXISTING ENTRY
D2	2' - 10"	7' - 0"	WOOD	PAINT		LOCK SET INTERIOR - LEVER BOTH SIDES	WATERCLOSET
D3	2' - 10"	6' - 8"	METAL	PAINT		PANIC BAR - INTERIOR - LEVER EXTERIOR	COOLER /FREEZER DOOR
D4a	2' - 10"	7' - 0"	METAL	PAINT	45 MINS	LOCK SET INTERIOR - LEVER BOTH SIDES	SERVICE-ELECTRICAL
D4b	2' - 0"	7' - 0"	METAL	PAINT		PANIC BAR - INTERIOR - LEVER EXTERIOR - LOCK SET	SERVICE-MOP SINK CLOSET
D5	3' - 0"	7' - 0"	METAL	PAINT	45 MINS	PANIC BAR - INTERIOR - LEVER EXTERIOR - LOCK SET	EXISTING EXIT



FRONT/MAIN ENTRY DOOR
GLASS
PULL HANDLE
PUSH BUTTON OPENER
SELF CLOSER
METAL FRAME

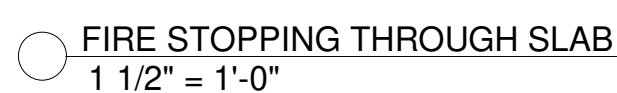
WATER CLOSET DOOR
HOLLOW CORE
LEVER HANDLE (BOTH
SIDES)
WOOD FRAME

COOLER PANEL DOOR
METAL PANEL
PULL HANDLE
(EXTERIOR)
PANIC BAR (INTERIOR)
SELF CLOSER
METAL FRAME

ELECTRICAL ROOM DOOR
45 MIN CLOSURE
METAL PANEL
LEVER HANDLE (EXTERIOR)
PANIC BAR (INTERIOR)
SELF CLOSER
METAL FRAME

MOP SINK CLOSET DOOR
METAL PANEL
LEVER HANDLE
(EXTERIOR)
PANIC BAR (INTERIOR)
SELF CLOSER
METAL FRAME

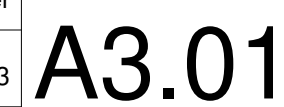
EXISTING EGRESS TO EXIT DOOR
45 MIN CLOSURE
METAL PANEL
LEVER HANDLE (EXTERIOR)
PANIC BAR (INTERIOR)
SELF CLOSER
METAL FRAME



WELDED EXHAUST DUCT

FLOOR SLAB GROUTED AROUND DUCTS TO PROVIDE
FIRE STOP WITH CHASE

2 LAYERS 5/8" TYPE 'X' GWB
2 1/2" METAL STUD
2 LAYERS 5/8" TYPE 'X' GWB
- ALL GWB EDGES TO BE FIRE TAPED
- 2 LAYERS FIRE WRAP AROUND DUCT CAN BE USED INSTEAD
OF INSIDE 2 LAYERS OF TYPE 'X' GWB
**-NOTE: FIRE SPECIFICATION CUT SHEET MUST BE APPROVED
BY CPR BEFORE INSTALLATION**

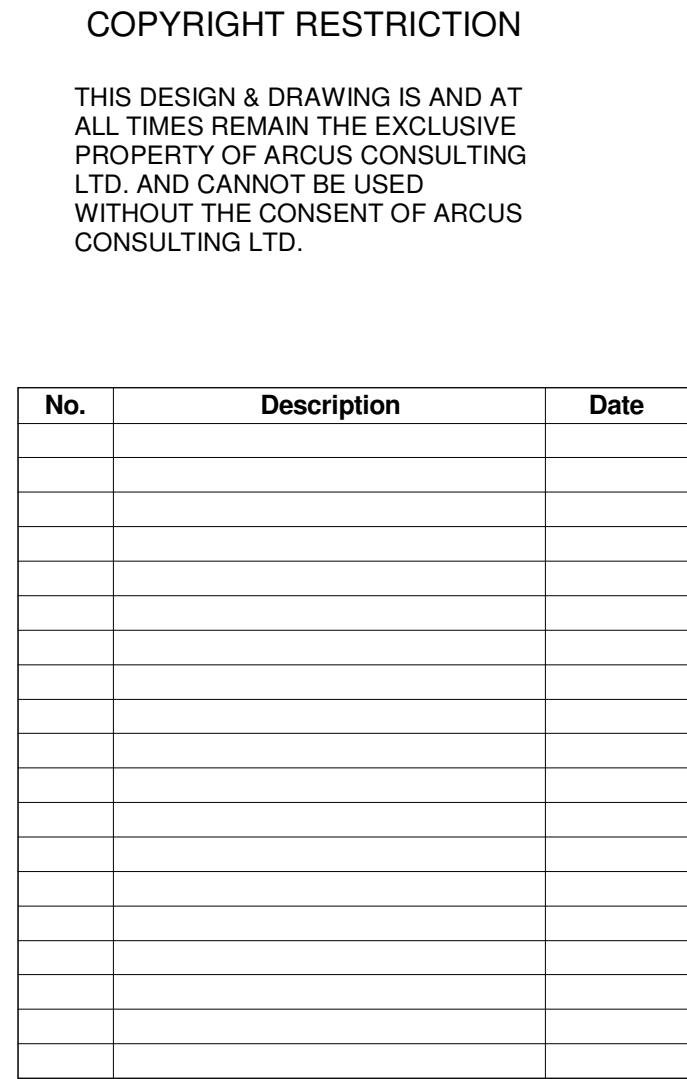






2x10 FIRE RETARDANT WOOD TRELLIS FINIS IN GRID LAYOUT (SEE PLAN) - "NON-COMBUSTIBLE"

NOTE: PLEASE SEE SECTION D FOR CONSTRUCTION

NOTE: PLEASE SEE DETAIL
SECTION DRAWING FOR
CONSTRUCTION INFORMATION

[illegible]

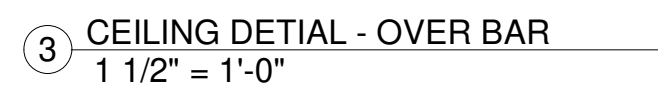
SEAL	<p>PROJECT NORTH</p>  <p>N</p>
	<p>TRUE NORTH</p>  <p>N</p>



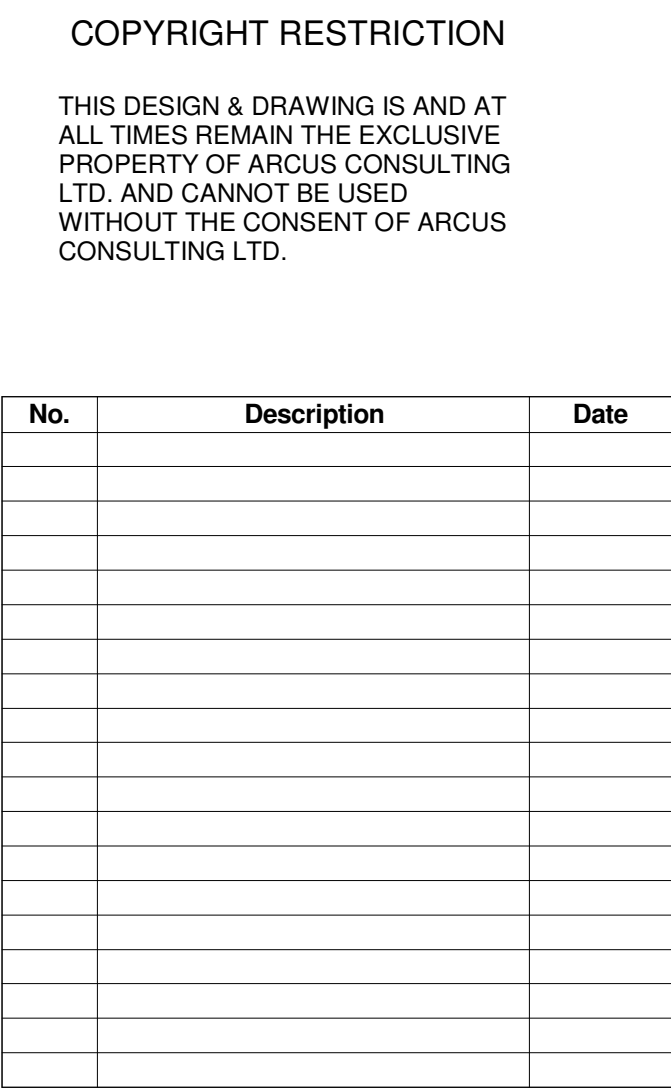
FEATURE CEILING DETAILS

DRAWN BY	Author	A4.01
CHECKED BY	Checker	
DATE	17/02/2023	
SCALE	As indicated	
PROJECT NO.	222-258	

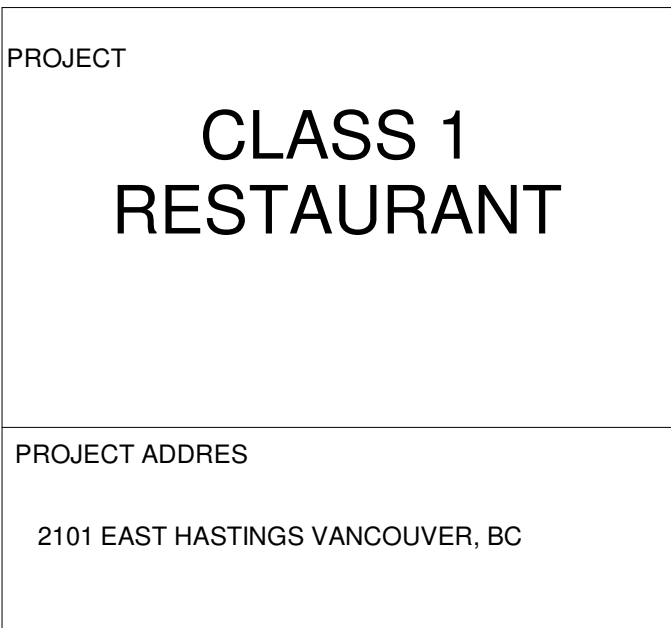
A4.01

[illegible]

\\FILESERVER\Documents\DRAWINGS\2022\222-258 368 Lakewood Dr., Vancouver\1 - Architectural Drawings\222-258 2101 E Hasings. Response to Comment.rvt

[illegible]

SEAL	PROJECT NORTH
	TRUE NORTH



WEST ELEVATION
(LAKEWOOD DRIVE)

DRAWN BY	MS	A4.02
CHECKED BY	VP	
DATE	19/07/2023	
SCALE	3/8" = 1'-0"	
PROJECT NO.	222-258	

