

SYMBOL LEGEND			
WIRING RUN IN WALL OR CEILING	S	WALL MOUNTED SINGLE POLE SWITCH	
WIRING RUN IN FLOOR	W	WALL MOUNTED THREE WAY SWITCH	
CEILING MOUNTED LED LINEAR FIXTURE	■	WALL MOUNTED DIMMER SWITCH	
RECESSED MOUNTED LED LINEAR FIXTURE	□	FIRE ALARM BREAKGLASS STATION	
CEILING MOUNTED LED LINEAR FIXTURE W/BATTERY PACK	■	FIRE ALARM GONG	
WALL MOUNTED LED FIXTURE	□	FIRE ALARM BUZZER	
SURFACE MOUNTED LED FIXTURE	□	FIRE HORN/STROBE	
RECESS MOUNTED LED FIXTURE	□	FIRE HORN	
WALL MOUNTED LED FIXTURE	□	FIRE STROBE	
LED LIGHT 2X2	□	FIRE ALARM ISOLATOR MODULE	
LED LIGHT 4FT	□	FIRE ALARM HOLD-OPEN DEVICE	
LED TRACK LIGHT	□	SMOKE DETECTOR	
PUCK LIGHTS	□	135°F FIRE ALARM HEAT	
PENDANT LIGHTS	□	200°F FIRE ALARM HEAT	
CEILING MOUNTED EXIT LIGHT	□	CEILING MOUNTED 120V SMOKE ALARM	
WALL MOUNTED EXIT LIGHT	□	CEILING MOUNTED 120V COMBINATION SMOKE/CO ALARM	
WALL MOUNTED EXIT LIGHT WITH EMERGENCY LAMPS	□	EMERGENCY BATTERY PACK C/W LED LAMPS	
SITE LIGHTING FIXTURE	□	REMOTE EMERGENCY LED HEADS	
MONOPOINT TRACK LIGHT	□	THERMOSTAT	
3" IN-GROUND LED	□	MOTOR	
CEILING MTD COMPACT FLUORESCENT FIXTURE	□	DISCONNECT SWITCH	
WALL MTD COMPACT FLUORESCENT FIXTURE	□	MOTOR STARTER	
RECESSED MTD COMPACT FLUORESCENT FIXTURE	□	BASEBOARD HEATER	
RECESSED STEP LIGHT	□	JUNCTION BOX	
WALL MOUNTED DUPLEX RECEPTACLE	□	WALL MOUNTED TELEVISION OUTLET	
WALL MOUNTED SWITCHED RECEPTACLE	□	TIMER	
WALL MOUNTED GFCI DUPLEX RECEPTACLE	□	RECESS MOUNTED PANELBOARD	
GFCI 20A T-SLOT DUPLEX RECEPTACLE, COUNTER HEIGHT	□	SURFACE MOUNTED PANELBOARD	
20A T-SLOT DUPLEX RECEPTACLE, COUNTER HEIGHT	□	DEDICATED CIRCUIT	
SPLIT-FEED DUPLEX RECEPTACLE, COUNTER HEIGHT	□	VACUUM	
WALL MOUNTED FOURPLEX RECEPTACLE	□	CEILING MOUNTED HID FIXTURE	
WEATHERPROOF DUPLEX RECEPTACLE (GFCI)	□	WALL MOUNTED HID FIXTURE	
FLOOR MOUNTED DUPLEX RECEPTACLE	□	3" DIA. POT LIGHT	
FLOOR MOUNTED TELEPHONE/DATA OUTLET	□	WALL MOUNTED VACANCY SENSOR	
WALL MOUNTED TELEPHONE OUTLET	□	WALL MOUNTED OCCUPANCY SENSOR	
SPECIAL RECEPTACLE 220V SINGLE PHASE	□	CEILING MOUNTED OCCUPANCY SENSOR	
WALL MOUNTED TELEPHONE/DATA OUTLET	□		
WALL MOUNTED DATA OUTLET	□		
TELEPHONE/TELEVISION COMBO OUTLET	□		

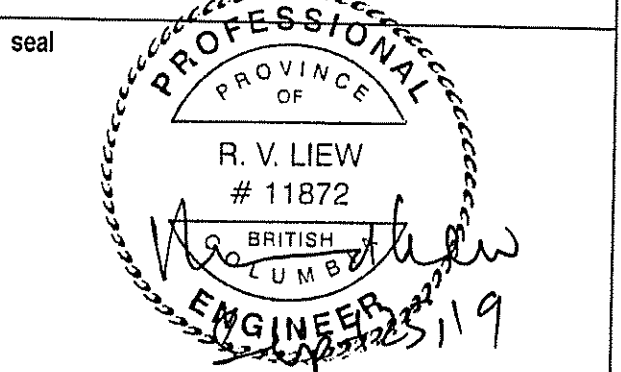
(1/4") (SYMBOL-14SEP2018)

nick milkovich
architects inc

Suite 303, 375 West 5th Avenue tel 604.737.6061
Vancouver, BC Canada V5Y 1J6 fax 604.737.6061
e-mail nma@nickmilkovicharchitects.com
web www.nickmilkovicharchitects.com

consultant

LIEW ENGINEERING LTD.
Electrical Consulting Engineers
108-11121 Horseshoe Way
Richmond, BC, V7A 5G7
Tel/Fax: 604-277-3157
Email: rliewengtd@telus.net



issued FOR BUILDING PERMIT 25SEP19

3
2
1
X
revisions

CITY OF RICHMOND
OCT 11 2019
RECEIVED

X

key plan

THE CITY HAS RELIED EXCLUSIVELY ON THE UNDERSIGNED REGISTERED PROFESSIONAL FOR THE ACCURACY OF THE PLANS IN CONFORMANCE WITH THE CURRENT EDITION OF THE B.C. BUILDING CODE IN REVIEWING THE PLANS SUBMITTED WITH THIS APPLICATION FOR A BUILDING PERMIT.

R.V. Liew
REGISTERED PROFESSIONAL

PERMIT ISSUED BY DATE

project title

INDIA CULTURAL CENTRE
OF CANADA

8600 NO. 5 ROAD,
RICHMOND, B.C.

drawing title

SITE PLAN

drawn	project north
checked	RVK
scale	AS SHOWN
drawing date	19JUL9
project no.	1909
rev.	E1

City of Richmond Building Approvals
City review of documents stamped:
Permit No. **19-875824-00**

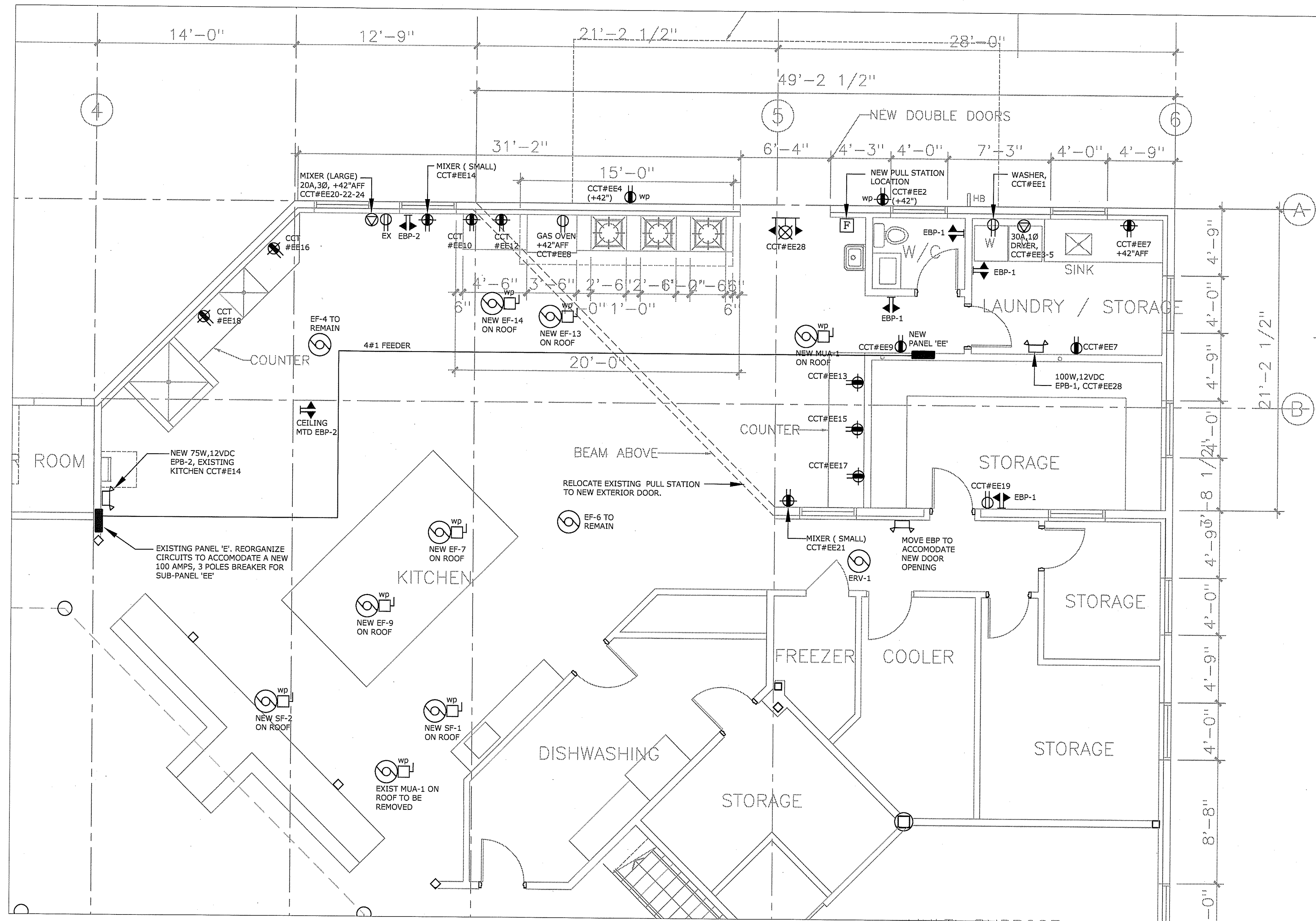
1. does not relieve the Owner of Lands referred to in this document from full responsibility for work being carried out in compliance with City and Provincial enactments;

2. is subject to terms and conditions printed on the permit and prescribed in the City bylaw

Reviewed by: _____ Date: _____

ALL ELECTRICAL DRAWING ISSUED FOR REVIEW ONLY AND NOT FOR CONSTRUCTION UNLESS INDICATED IN THE "RECORD OF ISSUE" COLUMN.

THESE PLANS MUST BE KEPT ON THE JOB SITE FOR INSPECTIONS



PART PLAN - POWER LAYOUT
Scale: 1/4" = 1'-0"

NOTE: PANEL 'EE' IS SUB-FED FROM EXISTING PANEL 'E'.

PANEL EE , 120/208 VOLTS 3 Ø 4 W					
BUS 100 A BKR 10,000 A.I.C.					
LOAD	TRIP	CIRC	CIRC	TRIP	LOAD
WASHER	15	1	2	20	REC-EXTERIOR
DRYER	30	3	4	20	REC-EXTERIOR
	2P	5	6		
REC-LAUNDRY	15	7	8	15	GAS OVEN
REC-CORRIDOR	15	9	10	20	REC-COUNTER
		11	12	20	REC-COUNTER
REC-COUNTER	20	13	14	20	MIXER (SM)
REC-COUNTER	20	15	16	20	REC-COUNTER
REC-COUNTER	20	17	18	20	REC-COUNTER
REC-STORAGE RM	15	19	20	20	
MIXER (SM)	15	21	22	3P	MIXER (LG)
		23	24	3P	
		25	26		
		27	28	15	LIGHTING
		29	30	15	ERV-1
		31	32		
		33	34		
		35	36		
		37	38		
		39	40		
		41	42		

ABBREVIATION
LTG - LIGHTING
REC - RECEPTACLE

PNL-42

CONSTRUCTION NOTES

- 1) REMOVE ALL EXISTING OUTLETS ON WALLS BEING DEMOLISHED. WORK CLOSELY WITH THE GENERAL CONTRACTOR AND REMOVE ALL UN-USED WIRING.
- 2) WHERE EXISTING WIRING ARE EXTENDED TO NEW LOCATION, SUCH WORK SHALL BE SPliced IN A PROPER MANNER IN A JUNCTION BOX OF SUITABLE SIZE. LABEL SUCH BOXES APPROPRIATELY.

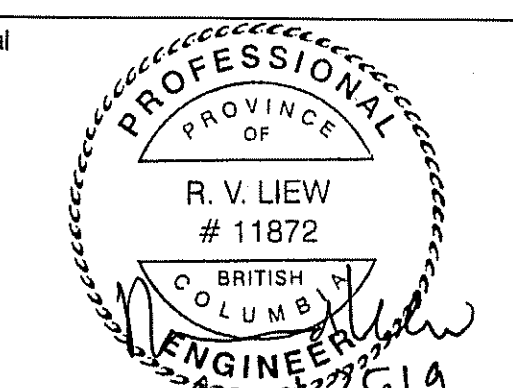
nick milkovich
architects inc

Suite 303, 375 West 5th Avenue tel 604.737.6061
Vancouver, BC, Canada V5Y 1J6 fax 604.737.6091
e-mail nma@milkoicharchitects.com
web www.milkoicharchitects.com

consultant

LIEW ENGINEERING LTD.
Electrical Consulting Engineers
108-11121 Horseshoe Way
Richmond, BC, V7A 5G7
Tel/Fax: 604-277-3157
Email: rliewengitd@telus.net

seal



issued FOR REVIEW 29JUL19
FOR BUILDING PERMIT 25SEP19

CITY OF RICHMOND

OCT 11 2019

RECEIVED

3
2
1
X
revisions

X

key plan

project title

INDIA CULTURAL CENTRE
OF CANADA

8600 NO. 5 ROAD,
RICHMOND, B. C.

drawing title

**POWER LAYOUT AND
DETAILS**

drawn

checked

scale

drawing date

project no.

rev.

project north

RVK

JAS SHOWN

19JUL9

1909

0

project north

RVK

JAS SHOWN

19JUL9

1909

0

project north

RVK

JAS SHOWN

19JUL9

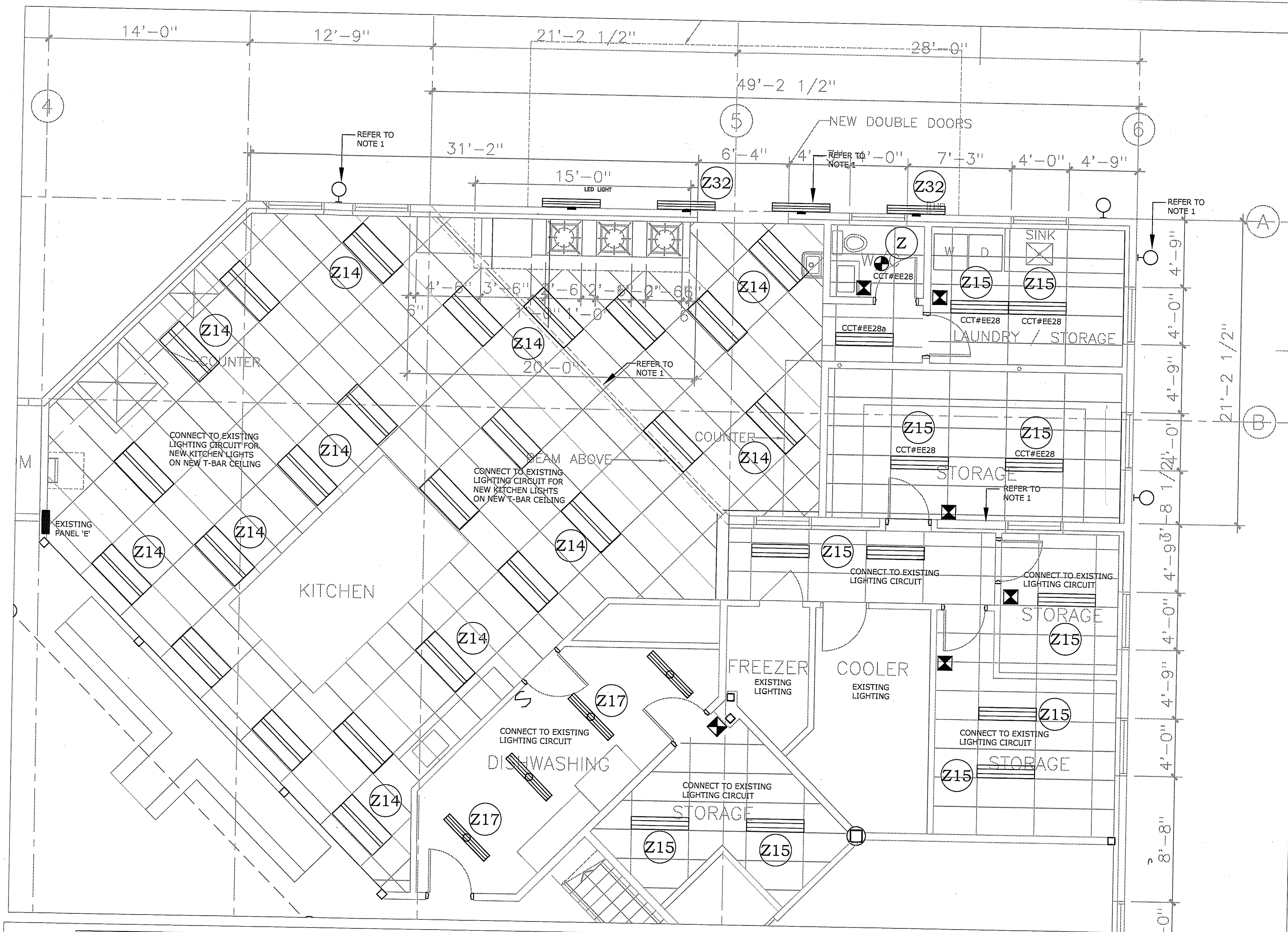
1909

0

19-875824-00

ALL ELECTRICAL DRAWING ISSUED FOR REVIEW
ONLY AND NOT FOR CONSTRUCTION UNLESS
INDICATED IN THE "RECORD OF ISSUE" COLUMN.

THESE PLANS MUST BE KEPT ON
THE JOB SITE FOR INSPECTIONS



CONSTRUCTION NOTES

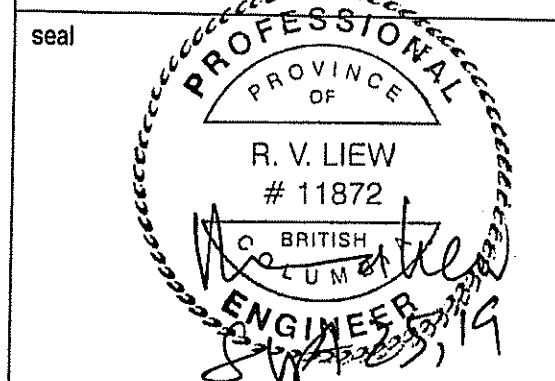
- 1) REMOVE ALL EXTERIOR LIGHTS ON WALLS AFFECTED BY THE NEW CONSTRUCTION. REUSE EXISTING CIRCUITS FOR NEW OUTDOOR LIGHTS.

nick milkovich
architects inc

Suite 303, 375 West 5th Avenue tel 604.737.6061
Vancouver, BC, Canada V5Y 1J6 fax 604.737.6091
e-mail nma@nickmilkovicharchitects.com
web www.nickmilkovicharchitects.com

consultant

LIEW ENGINEERING LTD.
Electrical Consulting Engineers
108-11121 Horseshoe Way
Richmond, BC, V7A 5G7
Tel/Fax: 604-277-3157
Email: rliewengltd@telus.net



issued 1 FOR REVIEW 01AUG19
2 FOR BUILDING PERMIT 25SEP19
3
1 X
2
0
revisions

CITY OF RICHMOND

OCT 11 2019

RECEIVED

key plan

project title

INDIA CULTURAL CENTRE
OF CANADA

8600 NO. 5 ROAD,
RICHMOND, B. C.

drawing title

**LIGHTING LAYOUT
AND DETAILS**

drawn	project north
checked	RVK
scale	AS SHOWN
drawing date	19JUL9
project no.	1909
rev.	E3

19-875824-00

ALL ELECTRICAL DRAWING ISSUED FOR REVIEW
ONLY AND NOT FOR CONSTRUCTION UNLESS
INDICATED IN THE "RECORD OF ISSUE" COLUMN.

THESE PLANS MUST BE KEPT ON
THE JOB SITE FOR INSPECTIONS

LUNINAIRE SCHEDULE

TYPE	DESCRIPTION	CAT. NO:	VOLT	NO. OF LAMP	TYPE OF LAMP	NOTE
Z	LED, SLIM SURFACE DOWNLIGHT, ONE PIECE PLASTIC FLANGE INJECTION MOULDED WHITE, HIGH TRANSMITTANCE LENS, DIMMABLE, LISTED DAMP LOCATIONS UNDER COVERED CEILING, ENERGY STAR CERTIFIED.	SIGNIFY LIGHTOLIER S7R837K	120		LED SIGNIFY STRIP, 1000 LUMENS 14 WATTS, 2700K	
Z14	LED, 2' X 4' FLAT PANEL, RECESSED IN INSULATED CEILING OR SURFACE MOUNT, DIMMING DRIVER.	EATON METALUX 24FP LED	120		38W, 4000 LMS, 3500K	
Z15	LED, 1' X 4', T-BAR RECESS MOUNTING, DIMMING DRIVER.	EATON METALUX 14FP LED	120		3400 LUMENS, 32 WATT, 3500K	
Z17	LED, 4" X 4" SURFACE MOUNTED, LED DRIVER, ROUND SEMI-FROSTED LENS, WHITE.	EATON METALUX 4SNLED-LD5-30SL-LN	120		LED, 3000 LUMENS, 21 WATT, 3500K, 141.2LM/W	(a) = WITH BUILT-IN SENSOR, (d) = STEP DIMMING WITH SENSOR, (e) = WITH 7 WATTS EMERGENCY BATTERY PACK, 988 LUMENS, 30 MINUTES
Z32	LED, VAPOURITITE, 4" SURFACE MOUNT, MEDIUM DISTRIBUTION, M FIBREGLASS HOUSING & GASKETTED CLEAR DIFFUSER SECURED BY CAM LATCHES, INTERNAL PRISMATIC LENS, LED DRIVER STANDARD 0-10V DIMMING.	EATON METALUX 4VT2-LD4	120		38W, 4000 LMS, 3500K	

LIGHTING LAYOUT PLAN

Scale: 1/4" = 1'-0"

SPECIFICATIONS

1) SCOPE

DIV.26 TO PROVIDE ALL LABOUR, MATERIALS & EQUIPMENT UNLESS SPECIFICALLY NOTED OTHERWISE TO COMPLETE & PUT IN OPERATING CONDITION ALL ELECTRICAL SYSTEMS AS INDICATED ON THE DRAWING & SPECIFIED HEREIN. ANY WORK &/OR DETAIL EVEN IF NOT SHOWN OR SPECIFIED, WHICH ARE OBVIOUSLY NECESSARY OR REASONABLY IMPLIED TO COMPLETE THE WORK &/OR MEET THE CODE REQUIREMENTS SHALL BE DONE AS IF BOTH SHOWN & SPECIFIED.

2) MATERIALS & WORKMANSHIP

ALL MATERIALS TO BE NEW, OF MINIMUM QUALITY SPECIFIED, & BEAR CSA APPROVAL. ALL WORK TO BE PERFORMED BY COMPETENT TRADESMEN, IN WORKMANLIKE MANNER. CLEAN UP ALL DEBRIS AT COMPLETION OF THIS PROJECT.

3) CODES, PERMITS & INSPECTIONS

INSTALLATION SHALL COMPLY WITH THE 2018 CURRENT EDITION OF THE CANADIAN ELECTRICAL CODE, GOVERNING BRITISH COLUMBIA BUILDING CODE 2018 & REGULATIONS OF THE ELECTRICAL INSPECTION AUTHORITY. OBTAIN PERMITS & PAY THE APPLICABLE FEES. AFTER COMPLETION OF THE WORK, FURNISH TO THE ENGINEER A CERTIFICATE OF FINAL INSPECTION & APPROVAL FROM THE INSPECTION DEPARTMENT.

4) VISIT TO SITE (MANDATORY)

EXAMINE THE SITE & LOCAL CONDITIONS AFFECTING THE WORK BEFORE SUBMITTING TENDER. NO EXTRAS WILL BE ALLOWED FOR WORK RESULTING FROM CONDITIONS WHICH WOULD HAVE BEEN EVIDENT UPON A THOROUGH EXAMINATION OF THE SITE.

5) APPROVALS

SUBSTITUTION OF MATERIALS, EQUIVALENT TO THOSE SPECIFIED, MAY BE MADE ONLY AFTER WRITTEN APPROVAL HAS BEEN OBTAINED FROM THE ENGINEER BEFORE CLOSING OF TENDERS.

6) GUARANTEE

DIV.26 SHALL GUARANTEE THE SATISFACTORY OPERATION OF ALL WORK & APPARATUS INSTALLED UNDER THIS CONTRACT & SHALL REPLACE FORTHWITH, AT HIS OWN EXPENSE, ANY PART WHICH MAY FAIL OR PROVE DEFECTIVE WITHIN A PERIOD OF 12 MONTHS AFTER FINAL ACCEPTANCE OF THE COMPLETE CONTRACT, ALWAYS PROVIDED THAT SUCH FAILURE IS NOT DUE TO IMPROPER USAGE OR ORDINARY WEAR & TEAR.

7) DRAWINGS & SPECIFICATIONS

SHOULD ANY DISCREPANCY APPEAR ON THE DRAWINGS & SPECIFICATIONS, WHICH LEAVES DOUBT AS TO THE INTENT & MEANING, OBTAIN A RULING FROM THE ENGINEER BEFORE SUBMITTING TENDER. FAILING THIS, ALLOW FOR MOST EXPENSIVE ALTERNATIVE OR REASONABLE ALTERNATIVE TO COMPLETE THE WORK.

8) CO-ORDINATION

DRAWINGS INDICATE GENERAL LOCATION & ROUTE TO BE FOLLOWED BY CONDUIT &/OR WIRE. FOLLOW ARCHITECTURAL, STRUCTURAL & MECHANICAL DRAWINGS FOR DETAILS OF THIS WORK & INSTALL ELECTRICAL CONDUIT, BOXES & FITTINGS TO CO-ORDINATE WITH ARCHITECTURAL, STRUCTURAL & MECHANICAL WORK & DETAILS. REFER TO ARCHITECTURAL & STRUCTURAL DRAWINGS FOR ACCURATE DIMENSIONS.

9) LOCATION OF OUTLETS

ENGINEER RESERVES THE RIGHT TO CHANGE LOCATION OF OUTLETS TO WITHIN 10' OF POINTS INDICATED ON PLANS WITHOUT EXTRA CHARGE PROVIDING DIV.16 IS ADVISED PRIOR TO INSTALLATION.

10) MOUNTING HEIGHTS

UNLESS OTHERWISE NOTED ON THE DRAWINGS OR IN THE SPECIFICATIONS, MOUNTING HEIGHTS FOR ELECTRICAL DEVICES TO BE AS FOLLOWS:

SWITCHES - 48" AFF
RECEPTACLES - 12" (UNO)
TELEPHONE OUTLETS - 12" (UNO)
EMERGENCY LAMPS - 96" AFF
MANUAL PULLSTATION - 47" AFF
FIRE BELL - 9' AFF

11) SHOP DRAWINGS

SUBMIT SHOP DRAWINGS OF ELECTRICAL COMPONENTS WHERE REQUIRED & INDICATED HEREIN.

12) RECORD DRAWINGS

MAINTAIN IN THE JOBSITE A SET OF PLANS & RECORD ALL CHANGES IN RED. TURN DRAWINGS MARKED "AS-BUILT" OVER TO THE ARCHITECTS AFTER COMPLETION OF THE PROJECT.

13) MECHANICAL EQUIPMENT WIRING

a) PROVIDE POWER WIRING TO ALL MECHANICAL EQUIPMENT AS SHOWN ON THE DRAWINGS &/OR EQUIPMENT SCHEDULE. PROVIDE MANUAL & MAGNETIC STARTERS FOR MOTORS, FANS & EQUIPMENT AS INDICATED ON THE DRAWINGS &/OR EQUIPMENT SCHEDULE. PROVIDE DISCONNECT SWITCHES FOR MOTORS, FANS & EQUIPMENT AS SHOWN ON THE DRAWINGS &/OR EQUIPMENT SCHEDULE. PROVIDE CONDUIT & WIRING TO ALL LINE VOLTAGE CONTROL DEVICES & MAKE FINAL CONNECT AT BOTH ENDS.

b) ALL LOW VOLTAGE WIRING UNLESS SPECIFICALLY NOTED OTHERWISE WILL BE THE RESPONSIBILITY OF DIV.15. ALL CONTROL DEVICES LIKE PRESSURE SWITCHES, FLOW SWITCHES, THERMOSTATS, HUMIDISTAT, etc. WILL BE SUPPLIED & INSTALLED BY DIV.15. FAN CONTROLS LIKE ON/OFF & SPEED CONTROLLERS WILL BE SUPPLIED BY DIV.15 & INSTALLED BY DIV.16. INTERLOCKING DEVICES LIKE RELAYS, SWITCHES & WIRING BETWEEN EQUIPMENT WILL BE THE RESPONSIBILITY OF DIV. 15.

14) WIRING METHODS

a) WIRE ALL SYSTEMS IN THE BUILDING IN CONDUIT EXCEPT AS FOLLOWS:
- NMD FOR BRANCH CIRCUIT WIRING IN WOOD FRAME PARTITIONS ONLY;
- ARMoured CABLE FOR BRANCH CIRCUIT WIRING IN STEEL FRAME PARTITIONS;
- FLEXIBLE CONDUIT WITH GTF WIRE FOR FINAL CONNECTIONS TO RECESSED LIGHTING TEMPERATURE RATING OF INSULATION OR LARGER CONDUCTOR SIZE IS REQUIRED; USE WIRE SPECIFICALLY APPROVED FOR THE PURPOSE;
- FLEXIBLE CONDUIT FOR CONNECTIONS TO MOTORS, FANS & OTHER MECHANICAL EQUIPMENT. LIQUID-TITE FOR WET AREAS.

b) GENERALLY & WHERE PERMITTED BY THE CANADIAN ELECTRICAL CODE, USE EMT CONDUIT. USE GALVANIZED RIGID CONDUIT AT ALL LOCATIONS WHERE IT IS BOTH EXPOSED & WITHIN 18" OF THE FLOOR PARTICULARLY FOR ALL CONDUIT EMERGING FROM SLABS, COLUMNS, etc. USE GALVANIZED RIGID CONDUIT IN MASONRY AT ALL LOCATIONS WHERE EMT CANNOT OR WILL NOT BE EFFECTIVELY PROTECTED FROM DAMAGE DURING CONSTRUCTION & AT ALL POINTS WHERE CONDUIT EMERGE FROM SLABS, COLUMNS, etc. INSTALL ALL WIRING CONCEALED IN ALL AREAS EXCEPT IN ELECTRICAL AND MECHANICAL ROOMS, REPAIR SHOP AREAS AND STORAGE ROOMS.

c) ALL BUILDING WIRE SHALL BE 98% CONDUCTIVITY COPPER WITH RW90 X-LINK INSULATION. MINIMUM SIZE CONDUCTOR SHALL BE NO.12.

d) ALL DC WIRING TO REMOTE LAMPS FROM BATTERY-PACKS SHALL BE NO.10 AWG WITH HOME RUNS NOT EXCEEDING 2% VOLTAGE DROP.

15) BOXES

EXCEPT WHERE NOTED OTHERWISE, BOXES SHALL BE PRESSED SHEET STEEL GALVANIZED TO CSA STANDARDS. HANDY BOXES OR SECTIONAL BOXES SHALL NOT BE USED. ALL OUTLETS FOR FLUSH WALL MOUNTING SWITCHES, RECEPTACLES, LOW TENSION, TELEPHONE OUTLETS, etc. SHALL BE NO.22151 WITH APPROPRIATE PLASTER RING FOR SINGLE OR 2-GANG OUTLETS.

16) SWITCHES

LINE VOLTAGE SWITCHES SHALL BE QUIET, SLOW MAKE, SLOW BREAK DESIGN, TOGGLE HANDLE WITH TOTALLY ENCLOSED CASE, RATED AT 15-AMPS, 120/277-VOLT AC, SPECIFICATION GRADE TYPE. COLOUR TO BE WHITE. HUBBELL CAT.NO.HBL12011 & HBL12031 FOR 3-WAY SWITCHES.

17) RECEPTACLES

a) FULL GANG SIZE, POLARIZED, DUPLEX, PARALLEL BLADE, UNDERGROUND SLOT, RATED AT 15A, 125V, A.C., SPECIFICATION GRADE TYPE. COLOUR TO BE WHITE. HUBBELL CAT.NO.52621.

b) ISOLATED GROUND RECEPTACLES SHALL BE HUBBELL I.G.5262.

18) PLATES

A FULL COMPLEMENT OF PLATES SHALL BE PROVIDED FOR SWITCHES & RECEPTACLES. PLATES SHALL BE STAINLESS STEEL TYPE 301 FOR FLUSH MOUNTED DEVICES. USE UTILITY TYPE FOR SURFACE MOUNTED DEVICES. CIRCUIT NUMBERS SHALL BE PROVIDED ON THE FACE OF THE PLATES.

19) LIGHTING SYSTEM

SUPPLY & INSTALL LUMINARIES, LAMPS, BALLASTS, SUPPORTS & ACCESSORIES, & FOR THE SUPPLY OF PLASTER FRAMES, TRIM RINGS & BACKBOXES FOR PLASTER OR DRYWALL CEILINGS OR CONCRETE FOR A COMPLETE INSTALLATION. PROVIDE ALL CONDUIT SYSTEM, WIRING & CONNECTIONS TO ALL LUMINARIES AS SHOWN ON THE DRAWINGS. (SEE LUMINAIRE SCHEDULE). PROVIDE SHOP DRAWINGS FOR APPROVALS.

20) IDENTIFICATION

PROVIDE ENGRAVE LAMICOID NAMEPLATES FOR EACH ITEM OR EQUIPMENT PROVIDED UNDER THIS WORK.

21) EXIT LIGHTING

SUPPLY & INSTALL 120V EXIT LIGHTING COMPLETE WITH LED LAMPS & RECHARGEABLE BATTERY. PROVIDE EXIT LIGHT WITH A DEDICATED CIRCUIT WITH DEDICATED NEUTRAL. LOCK-ON BREAKER REQUIRED. EXIT LIGHT SHALL BE THE READY-LITE PICTOGRAM TYPE.

22) OPERATING AND MAINTENANCE MANUALS

ASSEMBLE THREE COPIES OF MAINTENANCE MANUALS ORGANIZED IN SECTIONS CONTAINING ALL SHOP DRAWINGS AND OPERATING INSTRUCTION MANUALS.

23) FLOOR SAW CUTTING

SAW CUTTING OF FLOOR SHALL BE CARRIED OUT AFTER THE FLOOR HAS BEEN X-RAYED TO AVOID CONDUITS IN SLAB.

24) EMERGENCY LIGHTING

SUPPLY & INSTALL EMERGENCY BATTERY UNITS (EBU) AS SHOWN ON THE DRAWINGS & AS SPECIFIED HEREIN. UNITS SHALL BE COMPLETE WITH MOUNTING HARDWARE, AC PLUG-IN-CORD 10 YEAR LIFE SEALED LEAD BATTERY WITH SOLID STATE CHARGER, CONTROLS AND INDICATORS. UNITS SHALL BE READY-LITE 'LD' SERIES OR APPROVED ALTERNATE.

INDOOR REMOTE LAMPS, SHALL BE 12V DC, 6-WATT MR-16 LED SIMILAR TO READY-LITE 'RM' SUPPLIED WITH MOUNTING CANOPY.

FOR EXTERIOR APPLICATION, LAMPS SHALL BE READY-LITE 'WT' SERIES DOUBLE HEADS, 12V, 18W TUNGSTEN SEALED BEAM, BLACK COLOUR. PROVIDE CAST ALUMINIUM BOX FOR POST MOUNTING AND USE RIGID PVC CONDUIT OR LIQUID-TITE FLEX FOR WIRING.

25) OCCUPANCY SENSORS(ON/OFF/DIMMABLE)

SENSOR SWITCH SHALL BE SIMILAR TO LUTRON MAESTRO MODEL 'MA' WITH PLATE AND COLOUR TO SUIT WALL FINISHES; DIMMABLE FOR LED LOW VOLTAGE SOURCE.

26) FIRE ALARM ALARM

THIS BUILDING HAS AN EXISTING FIRE ALARM SYSTEM. RELOCATE PULL STATION AS SHOWN ON PLANS. ADD NEW DEVICES WHERE SHOWN ON PLANS.

INSTALLATION SHALL COMPLY WITH CAN/ULC 5524-01 REGULATIONS. PANEL MUST BE ULC LABELLED IN FRONT OF COVER.

FIRE ALARM EQUIPMENT SUPPLIER TO MAKE A THOROUGH INSPECTION OF THE COMPLETE INSTALLED FIRE ALARM SYSTEM & TO VERIFY THAT ALL THE COMPONENTS & EQUIPMENT ARE CONNECTED & FUNCTIONAL IN ACCORDANCE WITH MANUFACTURER'S RECOMMENDATIONS & ULC REQUIREMENTS. PROVIDE A CERTIFICATE AFTER THE SYSTEM HAS BEEN VERIFIED & PROOF OF LIABILITY INSURANCE VALID FOR NOT LESS THAN ONE YEAR FROM DATE OF FINAL INSPECTION.

VERIFICATION SHALL BE PERFORMED BY AN INDEPENDENT CONTRACTOR LICENCED TO PERFORM SUCH WORK.

27) ELECTRICAL EQUIPMENT SHUT-OFF

EQUIPMENT UNDER THE HOOD, IF ANY, SHALL BE INTER-LOCKED WITH THE FIRE SUPPRESSION SYSTEM SO THAT THEY ARE DEACTIVATED WHEN THE SYSTEM OPERATES. THE WIRING TO THE SYSTEM INCLUDING CONNECTION, SHALL BE BY ELECTRICAL CONTRACTOR. CO-ORDINATE WITH THE FIRE SUPPRESSION SYSTEM SUPPLIER. THE CONTROLS INCLUDE CONTACTORS & RELAYS ALL IN AN ENCLOSURE SHALL BE MOUNTED CLOSE BY TO THE FIRE SUPPRESSION SYSTEM.

28) KITCHEN VENTILATION SYSTEM

EXISTING EXHAUST FANS ARE BEING REPLACED WITH NEW FANS BY DIV.15. DIV. 26 SHALL CONFIRM ELECTRICAL DATA PRIOR TO RECONNECTING THE FANS. NEW WEATHERPROOF DISCONNECT SWITCHES ARE REQUIRED.

PROVIDE WIRING AND CONNECTIONS TO NEW FANS AS REQUIRED.

TEST SYSTEMS FOR PROPER SEQUENCE OF OPERATION TO MEET CURRENT CODE.

RECONNECT TO EXISTING FIRE ALARM ZONE FOR THE AS REQUIRED AFTER COMPLETION OF WORK RELATED TO THE VENTILATION SYSTEM.

ENSURE ELECTRICAL EQUIPMENT UNDER THE CANOPY ARE SHUT DOWN WHEN HOOD SUPPRESSION SYSTEM IS ACTIVATED.

ALL CONTROL WIRING SHALL BE BY DIV.15

29) MOTOR STARTERS

MOTOR STARTERS SHALL BE GROUPED AND MOUNTED IN ELECTRICAL ROOM AND OR ELECTRICAL CLOSETS. STARTERS SHALL BE PROPERLY LABELLED WITH LAMACOID NAMEPLATE. STARTERS SHALL BE PROPERLY SIZED INCLUDING OVERLOAD PROTECTION. USE APPROPRIATE ENCLOSURES FOR THE STARTERS.

COMBINATION STARTERS SHALL INCLUDE A 'HOA' SWITCH & AUXILIARY CONTACTS. WHERE REQUIRED, PROVIDE REMOTE 'HOA' SWITCH IN PROPER HOUSING FOR RECESS MOUNTING.

VARIABLE SPEED STARTERS & VARIABLE FREQUENCY DRIVE STARTERS SHALL BE SUPPLIED BY DIV. 15 & INSTALLATION SHALL BE BY DIV. 26. ALL CONTROL WIRING SHALL BE DIV.15. CONFIRM LOCATION OF STARTERS WITH DIV. 15 PRIOR TO INSTALLATION.

30) EXTERIOR RECEPTACLES

RECEPTACLES SHALL BE WEATHERPROOF COMPLETE WITH HINGED COVER, "WHILE-IN-USE" TYPE. ONLY RECEPTACLES ON THE GROUND FLOOR SHALL BE GFCI TYPE. ALL OTHER EXTERIOR RECEPTACLES ABOVE 8FT OF THE GROUND FLOOR SHALL BE STANDARD TYPE RECEPTACLES WITH "WHILE-IN-USE HINGED COVER.

31) PANELBOARDS

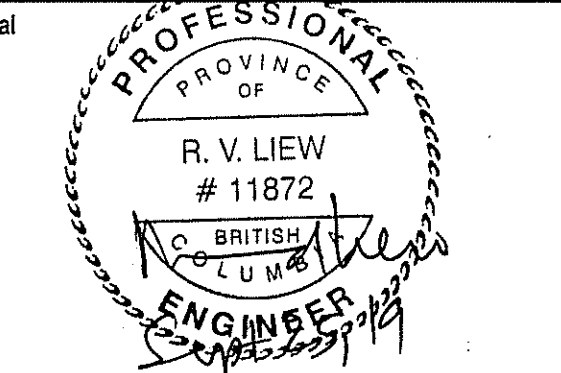
120/208V, 3-PHASE, 4-WIRE. SOLID NEUTRAL DESIGN WITH SEQUENCE TYPE BUSSING & FULL CAPACITY NEUTRAL. OF CAPACITY AS INDICATED ON THE SCHEDULE, COMPOSED OF AN ASSEMBLY OF BOLT-IN-PLACE MOLDED CASE AUTOMATIC AIR CIRCUIT BREAKERS AS INDICATED WITH THERMAL & MAGNETIC TRIP. TWO OR THREE POLE BREAKERS TO HAVE COMMON SIMULTANEOUS TRIP. AFFIX TYPEWRITTEN DIRECTORY TO THE INSIDE COVER OF PANELBOARD.

n i c k m i l k o v i c h
a r c h i t e c t s i n c

Suite 303, 375 West 5th Avenue tel 604.737.6061
Vancouver, BC, Canada V5Y 1J6 fax 604.737.6091
e-mail nma@milkovicharchitects.com
web www.milkovicharchitects.com

consultant

LIEW ENGINEERING LTD.
Electrical Consulting Engineers
108-11121 Horseshoe Way
Richmond, BC, V7A 5G7
Tel/Fax: 604-277-3157
Email: rliewengltd@telus.net



Issued
1 FOR BUILDING PERMIT 25SEP19

2
3
4
5
6
7
8
9
10
11
12

CITY OF RICHMOND

OCT 11 2019

RECEIVED

3
2
1 X
revisions X

key plan

project title

INDIA CULTURAL CENTRE
OF CANADA

8600 NO. 5 ROAD,
RICHMOND, B.C.

drawing title

ELECTRICAL
SPECIFICATIONS

drawn	project north
checked RVK	
scale AS SHOWN	
drawing date 19JUL9	printed
project no. 1909	drawing no. E4
rev. 	

19-875824-00

ALL ELECTRICAL DRAWING ISSUED FOR REVIEW
ONLY AND NOT FOR CONSTRUCTION UNLESS
INDICATED IN THE "RECORD OF ISSUE" COLUMN.

THESE PLANS MUST BE KEPT ON
THE JOB SITE FOR INSPECTIONS