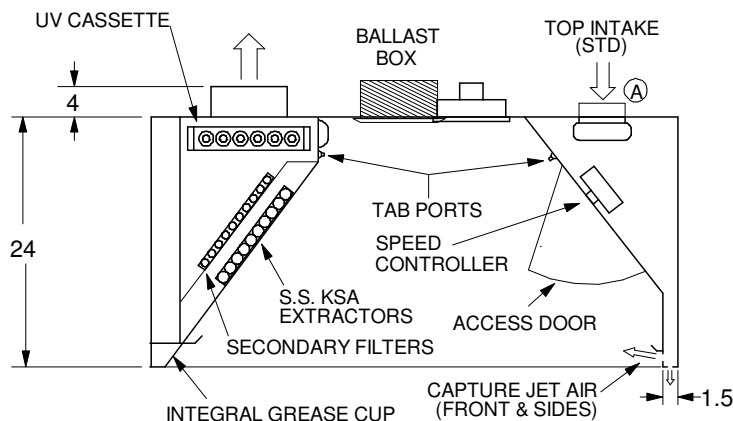
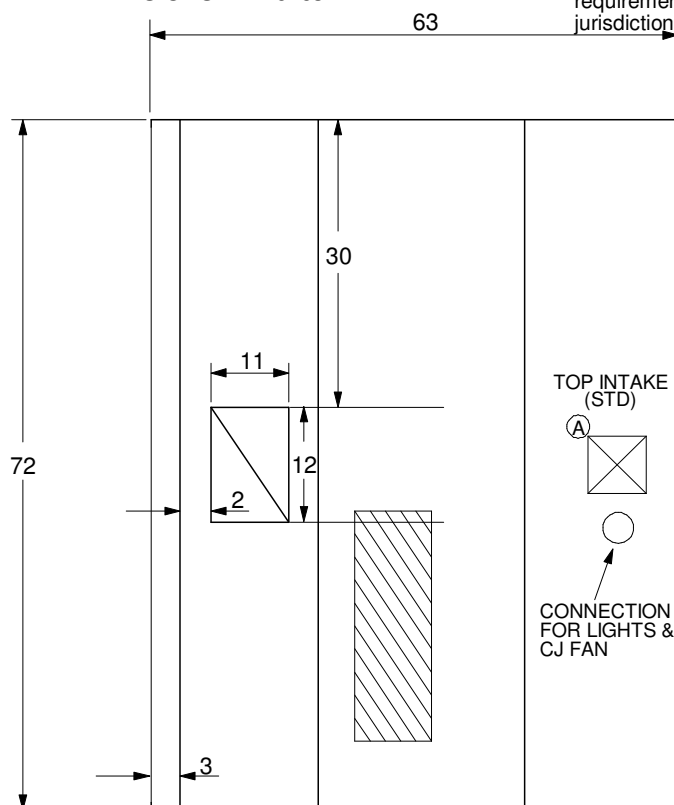


MODEL: KVE (Canopy)-UV

STANDARD FEATURES

ALL DIMENSIONS IN inches

* Factory must be advised of any special requirements of the "authority having jurisdiction" at time of quote



STD. KSA EXTRACTORS	3
1/2 KSA EXTRACTORS	
LED LIGHTS	2
Ⓐ TOP INTAKE CJ FAN	X
66" UV CASSETTE	-
38" UV CASSETTE	1

OPTIONS

INCANDESCENT LIGHTS	
FLUORESCENT LIGHTS	
REC. INCAND. LIGHTS	
SWITCH PANEL	-
Ⓑ FRONT INTAKE CJ FAN	
FIRE PROTECTION	
SIDE SKIRTS	
CEILING CLOSURE HT	
BACKSPLASH HT	
INSULATED BACKSPL.	
APPLIANCE INTERLOCK	
FIRE CABINET	
PAINTED FRONT	

MATERIAL

EXPOSED:	18 GA.304 S.S.
UNEXPOSED:	18 GA.304 S.S.
FRONT:	

NOTES:

SS finished back
c/w rear Capture-Jet

DATE	DWG. NO.	ITEM NO.	EXHAUST AIR INFORMATION *		
15/12/2014		H1	CFM (Total)	T.A.B.	S.P.
PROJECT: Go Grill - City Centre Mall			1603 [cfm]	1.21 ["H2O]	1.32 ["H2O]
LOCATION: Surrey, BC			CAPTURE AIR INFORMATION		
SUBMITTED BY: N.O.			CFM	T.A.B.	
Weight: 645 [lb]			83 [cfm]	0.25 ["H2O]	

* T.A.B. : Static pressure reading to measure the exhaust flow rate is at hot conditions. To use with cold conditions, multiply the T.A.B. value by 1.08.
S.P. : Static pressure drop of the hood (including collar)



Halton